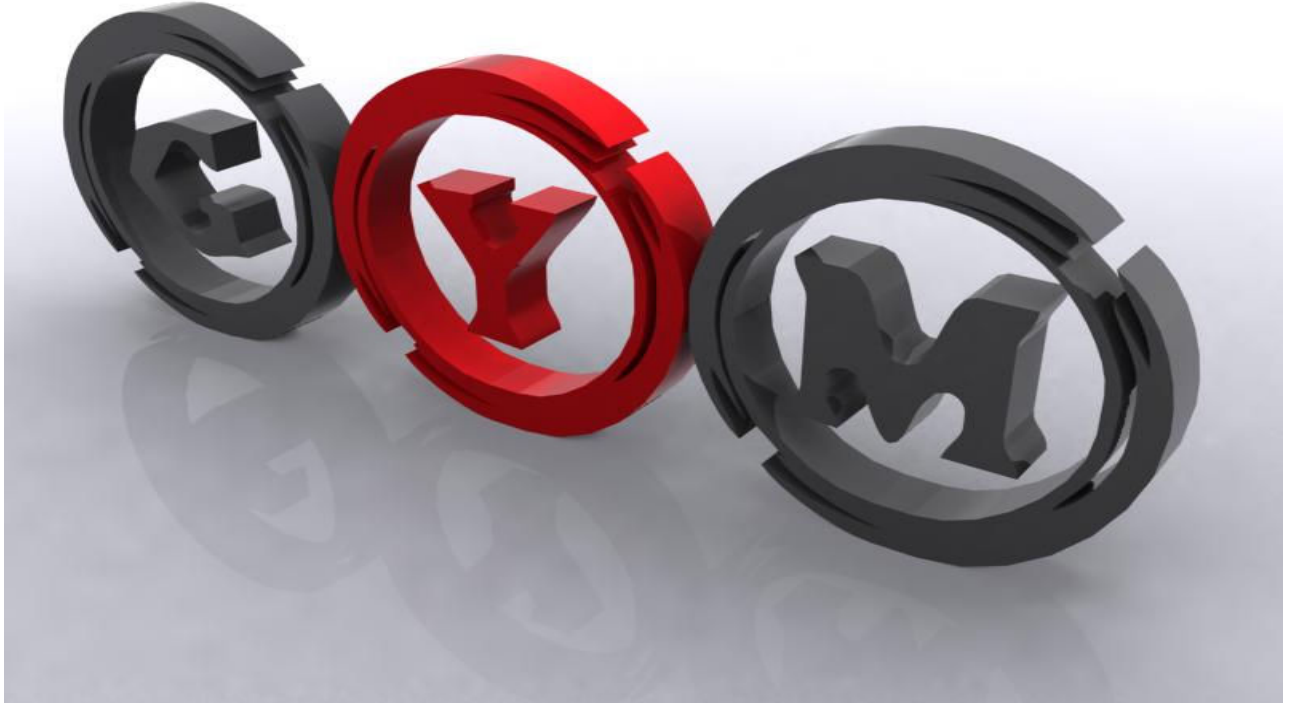


KAPSAM

- 1) 7/16(DIN) SERIES RF CONNECTORS
- 2) EIA FLANGE CONNECTORS
- 3) N SERIES RF CONNECTORS
- 4) RF ADAPTERS
- 5) 1.6/5.6(L9) SERIES RF CONNECTORS
- 6) N SERIES TERMINATOR (DUMMY LOAD)
- 7) SMA SERIES TERMINATOR (DUMMY LOAD)
- 8) 7/16(DIN) TERMINATOR (DUMMY LOAD)
- 9) OPEN/SHORT LOAD
- 10) COMBINER
- 11) DUPLEXER
- 12) POWER TAPPER
- 13) FIXED ATTENUATORS
- 14) N SERIES SURGE PROTECTOR(SURGE ARRESTOR)
- 15) 7/16(DIN) SERIES SURGE PROTECTOR(SURGE ARRESTOR)
- 16) POWER SPLITTERS(HIGH POWER)
- 17) POWER SPLITTERS(LOW POWER)
- 18) RF FEEDER CABLES AND JUMPER
- 19) CABLE ENTRY, GROUNDING KITS and CUTTING TOOLS



1)7/16(DIN) SERIES RF CONNECTORS



Item Name:	RF Connector	V.S.W.R:	≤ 1.10
Model:	DIN/M-1/2"-CP	Inner plating:	Silver plate
Class:	7/16(DIN)-Male	Shell plating:	Nickel or Silver
Frequency:	DC-7.5GHz	Temperature:	-40°C - +85°C
Impedance:	50 Ω	Durability:	500 Cycles
Match Cable:	1/2" Standard Feeder	Waterproof:	IP65



Item Name:	RF Connector	V.S.W.R:	≤ 1.10
Model:	DIN/F-1/2"-CP	Inner plating:	Silver plate
Class:	7/16(DIN)-Female	Shell plating:	Nickel or Silver
Frequency:	DC-7.5GHz	Temperature:	-40°C - +85°C
Impedance:	50 Ω	Durability:	500 Cycles
Match Cable:	1/2" Standard Feeder	Waterproof:	IP65



Item Name:	Right Angel RF Connector	V.S.W.R:	≤ 1.10
Model:	DIN/M-1/2"-CPR	Inner plating:	Silver plate
Class:	7/16(DIN)-Male(RA)	Shell plating:	Nickel or Silver
Frequency:	DC-7.5GHz	Temperature:	-40°C - +85°C
Impedance:	50 Ω	Durability:	500 Cycles
Match Cable:	1/2" Standard Feeder	Waterproof:	IP65



Item Name:	RF Connector	V.S.W.R:	≤ 1.10
Model:	DIN/M-1/2"SF-CP	Inner plating:	Silver plate
Class:	7/16(DIN)-Male	Shell plating:	Nickel or Silver
Frequency:	DC-7.5GHz	Temperature:	-40°C - +85°C
Impedance:	50 Ω	Durability:	500 Cycles
Match Cable:	1/2" Superflexible Cable	Waterproof:	IP65



Item Name:	RF Connector	V.S.W.R:	≤ 1.10
Model:	DIN/F-1/2"SF-CP	Inner plating:	Silver plate
Class:	7/16(DIN)-Female	Shell plating:	Nickel or Silver
Frequency:	DC-7.5GHz	Temperature:	-40°C - +85°C
Impedance:	50 Ω	Durability:	500 Cycles
Match Cable:	1/2" Superflexible Cable	Waterproof:	IP65



Item Name:	Right Angel RF Connector	V.S.W.R:	≤ 1.10
Model:	DIN/M-1/2"SF-CPR	Inner plating:	Silver plate
Class:	7/16(DIN)-Male(RA)	Shell plating:	Nickel or Silver
Frequency:	DC-7.5GHz	Temperature:	-40°C - +85°C
Impedance:	50 Ω	Durability:	500 Cycles
Match Cable:	1/2" Superflexible Cable	Waterproof:	IP65



Item Name:	RF Connector	V.S.W.R:	≤ 1.10
Model:	DIN/M-7/8"-RC	Inner plating:	Silver plate
Class:	7/16(DIN)-Male	Shell plating:	SY or Silver
Frequency:	DC-7.5GHz	Temperature:	-40°C - +85°C
Impedance:	50 Ω	Durability:	500 Cycles
Match Cable:	7/8" Standard Feeder	Waterproof:	IP65,RoHS



Item Name:	RF Connector	V.S.W.R:	≤ 1.10
Model:	DIN/F-7/8"-RC	Inner plating:	Silver plate
Class:	7/16(DIN)-Female	Shell plating:	SY or Silver
Frequency:	DC-7.5GHz	Temperature:	-40°C - +85°C
Impedance:	50 Ω	Durability:	500 Cycles
Match Cable:	7/8" Standard Feeder	Waterproof:	IP65,RoHS



Item Name:	RF Connector	V.S.W.R:	≤ 1.10
Model:	DIN/M-7/8"-RCU	Inner plating:	Silver plate
Class:	7/16(DIN)-Male	Shell plating:	SY1 or Silver
Frequency:	DC-7.5GHz	Temperature:	-40°C - +85°C
Impedance:	50 Ω	Durability:	500 Cycles
Match Cable:	7/8" Standard Feeder	Waterproof:	IP65,RoHS



Item Name:	RF Connector	V.S.W.R:	≤ 1.10
Model:	DIN/F-7/8"-RCU	Inner plating:	Silver plate
Class:	7/16(DIN)-Female	Shell plating:	SY or Silver
Frequency:	DC-7.5GHz	Temperature:	-40°C - +85°C
Impedance:	50 Ω	Durability:	500 Cycles
Match Cable:	7/8" Standard Feeder	Waterproof:	IP65,RoHS



Item Name:	RF Connector	V.S.W.R:	≤ 1.10
Model:	DIN/M-7/8"-CP	Inner plating:	Silver plate
Class:	7/16(DIN)-Male	Shell plating:	Nickel or Silver
Frequency:	DC-7.5GHz	Temperature:	-40°C - +85°C
Impedance:	50 Ω	Durability:	500 Cycles
Match Cable:	7/8" Standard Feeder	Waterproof:	IP65



Item Name:	RF Connector	V.S.W.R:	≤ 1.10
Model:	DIN/F-7/8"-CP	Inner plating:	Silver plate
Class:	7/16(DIN)-Female	Shell plating:	Nickel or Silver
Frequency:	DC-7.5GHz	Temperature:	-40°C - +85°C
Impedance:	50 Ω	Durability:	500 Cycles
Match Cable:	7/8" Standard Feeder	Waterproof:	IP65



Item Name: RF Connector
Model: DIN/M-7/8"-CPL
Class: 7/16(DIN)-Male
Frequency: DC-7.5GHz
Impedance: 50 Ω
Match Cable: 7/8" Standard Feeder

V.S.W.R: ≤ 1.10
Inner plating: Silver plate
Shell plating: Nickel or Silver
Temperature: $-40^{\circ}\text{C} - +85^{\circ}\text{C}$
Durability: 500 Cycles
Waterproof: IP65



Item Name: RF Connector
Model: DIN/F-7/8"-CPL
Class: 7/16(DIN)-Female
Frequency: DC-7.5GHz
Impedance: 50 Ω
Match Cable: 7/8" Standard Feeder

V.S.W.R: ≤ 1.10
Inner plating: Silver plate
Shell plating: Nickel or Silver
Temperature: $-40^{\circ}\text{C} - +85^{\circ}\text{C}$
Durability: 500 Cycles
Waterproof: IP65



Item Name: RF Connector
Model: DIN/M-7/8"-CPE
Class: 7/16(DIN)-Male
Frequency: DC-7.5GHz
Impedance: 50 Ω
Match Cable: 7/8" Standard Feeder

V.S.W.R: ≤ 1.10
Inner plating: Silver plate
Shell plating: Nickel or Silver
Temperature: $-40^{\circ}\text{C} - +85^{\circ}\text{C}$
Durability: 500 Cycles
Waterproof: [IP68,RoHS](#)



Item Name: RF Connector
Model: DIN/F-7/8"-CPE
Class: 7/16(DIN)-Female
Frequency: DC-7.5GHz
Impedance: 50 Ω
Match Cable: 7/8" Standard Feeder

V.S.W.R: ≤ 1.10
Inner plating: Silver plate
Shell plating: Nickel or Silver
Temperature: $-40^{\circ}\text{C} - +85^{\circ}\text{C}$
Durability: 500 Cycles
Waterproof: [IP68,RoHS](#)



Item Name: RF Connector
Model: DIN/M-7/8"-CPA
Class: 7/16(DIN)-Male
Frequency: DC-7.5GHz
Impedance: 50 Ω
Match Cable: 7/8" Standard Feeder

V.S.W.R: ≤ 1.10
Inner plating: Silver plate
Shell plating: Nickel or Silver
Temperature: $-40^{\circ}\text{C} - +85^{\circ}\text{C}$
Durability: 500 Cycles
Waterproof: [IP65,RoHS](#)



Item Name: RF Connector
Model: DIN/F-7/8"-CPA
Class: 7/16(DIN)-Female
Frequency: DC-7.5GHz
Impedance: 50 Ω
Match Cable: 7/8" Standard Feeder

V.S.W.R: ≤ 1.10
Inner plating: Silver plate
Shell plating: Nickel or Silver
Temperature: $-40^{\circ}\text{C} - +85^{\circ}\text{C}$
Durability: 500 Cycles
Waterproof: [IP65,RoHS](#)



Item Name:	RF Connector	V.S.W.R:	≤ 1.10
Model:	DIN/M-1-1/4"-CP	Inner plating:	Silver plate
Class:	7/16(DIN)-Male	Shell plating:	Silver plate
Frequency:	DC-7.5GHz	Temperature:	-40°C - +85°C
Impedance:	50 Ω	Durability:	500 Cycles
Match Cable:	1-1/4" Standard Feeder	Waterproof:	IP65,RoHS



Item Name:	RF Connector	V.S.W.R:	≤ 1.10
Model:	DIN/F-1-1/4"-CP	Inner plating:	Silver plate
Class:	7/16(DIN)-Female	Shell plating:	Silver plate
Frequency:	DC-7.5GHz	Temperature:	-40°C - +85°C
Impedance:	50 Ω	Durability:	500 Cycles
Match Cable:	1-1/4" Standard Feeder	Waterproof:	IP65,RoHS



Item Name:	RF Connector(Short)	V.S.W.R:	≤ 1.10
Model:	DIN/F-1-1/4"-CHS	Inner plating:	Silver plate
Class:	7/16(DIN)-Female	Shell plating:	Nickel or Silver
Frequency:	DC-7.5GHz	Temperature:	-40°C - +85°C
Impedance:	50 Ω	Durability:	500 Cycles
Match Cable:	1-1/4" Standard Feeder	Waterproof:	IP65



Item Name:	RF Connector	V.S.W.R:	≤ 1.10
Model:	DIN/M-1-5/8"-CP	Inner plating:	Silver plate
Class:	7/16(DIN)-Male	Shell plating:	Silver plate
Frequency:	DC-7.5GHz	Temperature:	-40°C - +85°C
Impedance:	50 Ω	Durability:	500 Cycles
Match Cable:	1-5/8" Standard Feeder	Waterproof:	IP65,RoHS



Item Name:	RF Connector	V.S.W.R:	≤ 1.10
Model:	DIN/F-1-5/8"-CP	Inner plating:	Silver plate
Class:	7/16(DIN)-Female	Shell plating:	Silver plate
Frequency:	DC-7.5GHz	Temperature:	-40°C - +85°C
Impedance:	50 Ω	Durability:	500 Cycles
Match Cable:	1-5/8" Standard Feeder	Waterproof:	IP65,RoHS



Item Name:	RF Connector (Short)	V.S.W.R:	≤ 1.10
Model:	DIN/M-1-5/8"-CPS	Inner plating:	Silver plate
Class:	7/16(DIN)-Male	Shell plating:	Silver plate
Frequency:	DC-7.5GHz	Temperature:	-40°C - +85°C
Impedance:	50 Ω	Durability:	500 Cycles
Match Cable:	1-5/8" Standard Feeder	Waterproof:	IP65



Item Name:	RF Connector (Short)	V.S.W.R:	≤ 1.10
Model:	DIN/F-1-5/8"-CPS	Inner plating:	Silver plate
Class:	7/16(DIN)-Female	Shell plating:	Nickel or Silver
Frequency:	DC-7.5GHz	Temperature:	-40°C - +85°C
Impedance:	50 Ω	Durability:	500 Cycles
Match Cable:	1-5/8" Standard Feeder	Waterproof:	IP65



Item Name:	RF Connector (Short)	V.S.W.R:	≤ 1.10
Model:	DIN/M-1-5/8"-CHS	Inner plating:	Silver plate
Class:	7/16(DIN)-Male	Shell plating:	Nickel or Silver
Frequency:	DC-7.5GHz	Temperature:	-40°C - +85°C
Impedance:	50 Ω	Durability:	500 Cycles
Match Cable:	1-5/8" Standard Feeder	Waterproof:	IP65



Item Name:	RF Connector (Short)	V.S.W.R:	≤ 1.10
Model:	DIN/F-1-5/8"-CHS	Inner plating:	Silver plate
Class:	7/16(DIN)-Female	Shell plating:	Nickel or Silver
Frequency:	DC-7.5GHz	Temperature:	-40°C - +85°C
Impedance:	50 Ω	Durability:	500 Cycles
Match Cable:	1-5/8" Standard Feeder	Waterproof:	IP65



Item Name:	RF Connector	V.S.W.R:	≤ 1.10
Model:	DIN/F-BSX	Inner plating:	Silver plate
Class:	7/16(DIN)-Female	Shell plating:	Nickel or Silver
Frequency:	DC-7.5GHz	Temperature:	-40°C - +85°C
Impedance:	50 Ω	Durability:	500 Cycles
Applicable:	Microwave	Waterproof:	IP65,RoHS



Item Name:	RF Connector	V.S.W.R:	≤ 1.10
Model:	DIN/F-BSX	Inner plating:	Silver plate
Class:	7/16(DIN)-Female	Shell plating:	Nickel or Silver
Frequency:	DC-7.5GHz	Temperature:	-40°C - +85°C
Impedance:	50 Ω	Durability:	500 Cycles
Applicable:	Microwave	Waterproof:	IP65,RoHS



Item Name:	RF Connector	V.S.W.R:	≤ 1.10
Model:	DIN/F-BSX	Inner plating:	Silver plate
Class:	7/16(DIN)-Female	Shell plating:	Nickel or Silver
Frequency:	DC-7.5GHz	Temperature:	-40°C - +85°C
Impedance:	50 Ω	Durability:	500 Cycles
Applicable:	Microwave	Waterproof:	IP65,RoHS



Item Name:	RF Connector	V.S.W.R:	≤ 1.10
Model:	DIN/F-BSX	Inner plating:	Silver plate
Class:	7/16(DIN)-Female	Shell plating:	Nickel or Silver
Frequency:	DC-7.5GHz	Temperature:	$-40^{\circ}\text{C} - +85^{\circ}\text{C}$
Impedance:	50 Ω	Durability:	500 Cycles
Applicable:	Microwave	Waterproof:	IP65,RoHS



Item Name:	RF Connector	V.S.W.R:	≤ 1.10
Model:	DIN/F-BSX	Inner plating:	Silver plate
Class:	7/16(DIN)-Female	Shell plating:	Nickel or Silver
Frequency:	DC-7.5GHz	Temperature:	$-40^{\circ}\text{C} - +85^{\circ}\text{C}$
Impedance:	50 Ω	Durability:	500 Cycles
Applicable:	Microwave	Waterproof:	IP65,RoHS



Item Name:	RF Connector	V.S.W.R:	≤ 1.10
Model:	DIN/M-BSX	Inner plating:	Silver plate
Class:	7/16(DIN)-Male	Shell plating:	Nickel or Silver
Frequency:	DC-7.5GHz	Temperature:	$-40^{\circ}\text{C} - +85^{\circ}\text{C}$
Impedance:	50 Ω	Durability:	500 Cycles
Applicable:	Microwave	Waterproof:	IP65

2.EIA FLANGE CONNECTORS



EIA FLANGE CONNECTOR



Item Name:	EIA Flange Connector	Impedance:	50 Ω
Model:	EIA78-1/2"-TS	V.S.W.R:	≤ 1.05
Class:	EIA Flange	Inner Conductor:	Silver plate
Frequency:	DC-3GHz	Shell plating:	Silver or Tri-Plate
Match Cable:	1/2" Standard Feeder	Temperature:	-40°C - +85°C



Item Name:	EIA Flange Connector	Impedance:	50 Ω
Model:	EIA78-1/2"-JN	V.S.W.R:	≤ 1.07
Class:	EIA Flange	Inner Conductor:	Silver plate
Frequency:	DC-3GHz	Shell plating:	Nickel Plate
Match Cable:	1/2" Standard Feeder	Temperature:	-40°C - +85°C



Item Name:	EIA Flange Connector	Impedance:	50 Ω
Model:	EIA78-7/8"-TS	V.S.W.R:	≤ 1.05
Class:	EIA Flange	Inner Conductor:	Silver plate
Frequency:	DC-3GHz	Shell plating:	Silver or Tri-Plate
Match Cable:	7/8" Standard Feeder	Temperature:	-40°C - +85°C



Item Name:	EIA Flange Connector	Impedance:	50 Ω
Model:	EIA78-7/8"-JN	V.S.W.R:	≤ 1.07
Class:	EIA Flange	Inner Conductor:	Silver plate
Frequency:	DC-3GHz	Shell plating:	Nickel Plate
Match Cable:	7/8" Standard Feeder	Temperature:	-40°C - +85°C



Item Name:	EIA Flange Connector	Impedance:	50 Ω
Model:	EIA158-7/8"-JN	V.S.W.R:	≤ 1.07
Class:	EIA Flange	Inner Conductor:	Silver plate
Frequency:	DC-3GHz	Shell plating:	Nickel Plate
Match Cable:	7/8" Standard Feeder	Temperature:	-40°C - +85°C



Item Name:	EIA Flange Connector	Impedance:	50 Ω
Model:	EIA158-1-5/8"-TS	V.S.W.R:	≤ 1.07
Class:	EIA Flange	Inner plating:	Silver plate
Frequency:	DC-3GHz	Shell plating:	Silver or Tri-Plate
Match Cable:	1-5/8" Standard Feeder	Temperature:	-40°C - +85°C



Item Name:	EIA Flange Connector	Impedance:	50 Ω
Model:	EIA158-1-5/8"-JN	V.S.W.R:	≤ 1.07
Class:	EIA Flange	Inner plating:	Silver plate
Frequency:	DC-3GHz	Shell plating:	Nickel Plate
Match Cable:	1-5/8" Standard Feeder	Temperature:	-40°C - +85°C



Item Name:	EIA Flange Connector	Impedance:	50 Ω
Model:	EIA78-7/8"AR-SN	V.S.W.R:	≤ 1.05
Class:	EIA Flange	Inner Conductor:	Silver plate
Frequency:	DC-3GHz	Shell plating:	Nickel Plate
Match Cable:	7/8" Air Cable	Temperature:	-40°C - +85°C



Item Name:	EIA Flange Connector	Impedance:	50 Ω
Model:	EIA158-1-5/8"AR-SN	V.S.W.R:	≤ 1.05
Class:	EIA Flange	Inner Conductor:	Silver plate
Frequency:	frequency: frekans, sıklık, sık sık olma, titreşim sıklığı	Shell plating:	Nickel Plate
Match Cable:	1-5/8" Air Cable	Temperature:	-40°C - +85°C



Item Name:	EIA Flange Connector	Impedance:	50 Ω
Model:	EIA318-3-1/8"AR-SN	V.S.W.R:	≤ 1.05
Class:	EIA Flange	Inner Conductor:	Silver plate
Frequency:	DC-3GHz	Shell plating:	Nickel Plate
Match Cable:	3-1/8" Air Cable	Temperature:	-40°C - +85°C



Item Name:	EIA Flange Inner	Match Flange:	7/8" EIA Flange
Model:	EIA78-INS	Impedance:	50 Ω
Class:	7/8" EIA Inner	Inner plating:	Silver plate
Frequency:	DC-3GHz	Temperature:	-40°C - +85°C



Item Name:	EIA Flange Inner	Match Flange:	1-5/8" EIA Flange
Model:	EIA158-INS	Impedance:	50 Ω
Class:	1-5/8" EIA Inner	Inner plating:	Silver plate
Frequency:	DC-3GHz	Temperature:	-40°C - +85°C



Item Name:	EIA Flange Inner	Match Flange:	1-5/8" EIA Flange
Model:	EIA158-INSL(Long)	Impedance:	50 Ω
Class:	1-5/8" EIA Inner	Inner plating:	Silver plate
Frequency:	DC-3GHz	Temperature:	-40°C - +85°C



Item Name:	EIA Flange Inner	Match Flange:	3-1/8" EIA Flange
Model:	EIA318-INS	Impedance:	50 Ω
Class:	3-1/8" EIA Inner	Inner plating:	Silver plate
Frequency:	DC-3GHz	Temperature:	-40°C - +85°C

3. N SERIES RF CONNECTORS





Item Name:	RF Connector	V.S.W.R:	≤ 1.10
Model:	N/M-1/4"-CP	Inner plating:	Silver plate
Class:	N-Male	Shell plating:	Nickel or Silver
Frequency:	DC-11GHz	Temperature:	-40°C - +85°C
Impedance:	50 Ω	Durability:	500 Cycles
Match Cable:	1/4" Standard Feeder	Waterproof:	IP65



Item Name:	RF Connector	V.S.W.R:	≤ 1.10
Model:	N/F-1/4"-CP	Inner plating:	Silver plate
Class:	N-Female	Shell plating:	Nickel or Silver
Frequency:	DC-11GHz	Temperature:	-40°C - +85°C
Impedance:	50 Ω	Durability:	500 Cycles
Match Cable:	1/4" Standard Feeder	Waterproof:	IP65



Item Name:	RF Connector	V.S.W.R:	≤ 1.10
Model:	N/M-1/4"SF-CP	Inner plating:	Silver plate
Class:	N-Male	Shell plating:	Nickel or Silver
Frequency:	DC-11GHz	Temperature:	-40°C - +85°C
Impedance:	50 Ω	Durability:	500 Cycles
Match Cable:	1/4" Superflexible Cable	Waterproof:	IP65



Item Name:	RF Connector	V.S.W.R:	≤ 1.10
Model:	N/F-1/4"SF-CP	Inner plating:	Silver plate
Class:	N-Female	Shell plating:	Nickel or Silver
Frequency:	DC-11GHz	Temperature:	-40°C - +85°C
Impedance:	50 Ω	Durability:	500 Cycles
Match Cable:	1/4" Superflexible Cable	Waterproof:	IP65



Item Name:	RF Connector	V.S.W.R:	≤ 1.10
Model:	N/M-3/8"-CP	Inner plating:	Silver plate
Class:	N-Male	Shell plating:	Nickel or Silver
Frequency:	DC-11GHz	Temperature:	-40°C - +85°C
Impedance:	50 Ω	Durability:	500 Cycles
Match Cable:	3/8" Standard Feeder	Waterproof:	IP65



Item Name:	RF Connector	V.S.W.R:	≤ 1.10
Model:	N/F-3/8"-CP	Inner plating:	Silver plate
Class:	N-Female	Shell plating:	Nickel or Silver
Frequency:	DC-11GHz	Temperature:	-40°C - +85°C
Impedance:	50 Ω	Durability:	500 Cycles
Match Cable:	3/8" Standard Feeder	Waterproof:	IP65



Item Name:	Right Angel RF Connector	V.S.W.R:	≤ 1.15
Model:	N/M-3/8"-CPR	Inner plating:	Silver plate
Class:	N-Male(RA)	Shell plating:	Nickel or Silver
Frequency:	DC-11GHz	Temperature:	-40°C - +85°C
Impedance:	50 Ω	Durability:	500 Cycles
Match Cable:	3/8" Standard Feeder	Waterproof:	IP65



Item Name:	RF Connector	V.S.W.R:	≤ 1.10
Model:	N/M-3/8"SF-CP	Inner plating:	Silver plate
Class:	N-Male	Shell plating:	Nickel or Silver
Frequency:	DC-11GHz	Temperature:	-40°C - +85°C
Impedance:	50 Ω	Durability:	500 Cycles
Match Cable:	3/8" Superflexible Cable	Waterproof:	IP65



Item Name:	RF Connector	V.S.W.R:	≤ 1.10
Model:	N/F-3/8"SF-CP	Inner plating:	Silver plate
Class:	N-Female	Shell plating:	Nickel or Silver
Frequency:	DC-11GHz	Temperature:	-40°C - +85°C
Impedance:	50 Ω	Durability:	500 Cycles
Match Cable:	3/8" Superflexible Cable	Waterproof:	IP65



Item Name:	Right Angel RF Connector	V.S.W.R:	≤ 1.15
Model:	N/M-3/8"SF-CPA	Inner plating:	Silver plate
Class:	N-Male(RA)	Shell plating:	Nickel or Silver
Frequency:	DC-11GHz	Temperature:	-40°C - +85°C
Impedance:	50 Ω	Durability:	500 Cycles
Match Cable:	3/8" Superflexible Cable	Waterproof:	IP65



Item Name:	RF Connector	V.S.W.R:	≤ 1.10
Model:	N/M-1/2"-CP	Inner plating:	Silver plate
Class:	N-Male	Shell plating:	Nickel or Silver
Frequency:	DC-11GHz	Temperature:	-40°C - +85°C
Impedance:	50 Ω	Durability:	500 Cycles
Match Cable:	1/2" Standard Feeder	Waterproof:	IP65



Item Name:	RF Connector	V.S.W.R:	≤ 1.10
Model:	N/F-1/2"-CP	Inner plating:	Silver plate
Class:	N-Female	Shell plating:	Nickel or Silver
Frequency:	DC-11GHz	Temperature:	-40°C - +85°C
Impedance:	50 Ω	Durability:	500 Cycles
Match Cable:	1/2" Standard Feeder	Waterproof:	IP65



Item Name:	RF Connector	V.S.W.R:	≤ 1.10
Model:	N/M-1/2"-CPE	Inner plating:	Silver plate
Class:	N-Male	Shell plating:	Nickel or Silver
Frequency:	DC-11GHz	Temperature:	-40°C - +85°C
Impedance:	50 Ω	Durability:	500 Cycles
Match Cable:	1/2" Standard Feeder	Waterproof:	IP68,RoHS



Item Name:	RF Connector	V.S.W.R:	≤ 1.10
Model:	N/F-1/2"-CPE	Inner plating:	Silver plate
Class:	N-Female	Shell plating:	Nickel or Silver
Frequency:	DC-11GHz	Temperature:	-40°C - +85°C
Impedance:	50 Ω	Durability:	500 Cycles
Match Cable:	1/2" Standard Feeder	Waterproof:	IP68,RoHS



Item Name:	Right Angel RF Connector	V.S.W.R:	≤ 1.15
Model:	N/M-1/2"-CPR	Inner plating:	Silver plate
Class:	N-Male(RA)	Shell plating:	Nickel or Silver
Frequency:	DC-11GHz	Temperature:	-40°C - +85°C
Impedance:	50 Ω	Durability:	500 Cycles
Match Cable:	1/2" Standard Feeder	Waterproof:	IP65



Item Name:	RF Connector	V.S.W.R:	≤ 1.10
Model:	N/M-1/2"SF-CP	Inner plating:	Silver plate
Class:	N-Male	Shell plating:	Nickel or Silver
Frequency:	DC-11GHz	Temperature:	-40°C - +85°C
Impedance:	50 Ω	Durability:	500 Cycles
Match Cable:	1/2" Superflexible Cable	Waterproof:	IP65



Item Name:	RF Connector	V.S.W.R:	≤ 1.10
Model:	N/F-1/2"SF-CP	Inner plating:	Silver plate
Class:	N-Female	Shell plating:	Nickel or Silver
Frequency:	DC-11GHz	Temperature:	-40°C - +85°C
Impedance:	50 Ω	Durability:	500 Cycles
Match Cable:	1/2" Superflexible Cable	Waterproof:	IP65



Item Name:	Right Angel RF Connector	V.S.W.R:	≤ 1.15
Model:	N/M-1/2"SF-CPR	Inner plating:	Silver plate
Class:	N-Male(RA)	Shell plating:	Nickel or Silver
Frequency:	DC-11GHz	Temperature:	-40°C - +85°C
Impedance:	50 Ω	Durability:	500 Cycles
Match Cable:	1/2" Superflexible Cable	Waterproof:	IP65



Item Name:	RF Connector	V.S.W.R:	≤ 1.10
Model:	N/M-7/8"-CP	Inner plating:	Silver plate
Class:	N-Male	Shell plating:	Nickel or Silver
Frequency:	DC-11GHz	Temperature:	-40°C - +85°C
Impedance:	50 Ω	Durability:	500 Cycles
Match Cable:	7/8" Standard Feeder	Waterproof:	IP65



Item Name:	RF Connector	V.S.W.R:	≤ 1.10
Model:	N/F-7/8"-CP	Inner plating:	Silver plate
Class:	N-Female	Shell plating:	Nickel or Silver
Frequency:	DC-11GHz	Temperature:	-40°C - +85°C
Impedance:	50 Ω	Durability:	500 Cycles
Match Cable:	7/8" Standard Feeder	Waterproof:	IP65



Item Name:	RF Connector	V.S.W.R:	≤ 1.10
Model:	N/M-1-1/4"-CP	Inner plating:	Silver plate
Class:	N-Male	Shell plating:	Nickel or Silver
Frequency:	DC-11GHz	Temperature:	-40°C - +85°C
Impedance:	50 Ω	Durability:	500 Cycles
Match Cable:	1-1/4" Standard Feeder	Waterproof:	IP65,RoHS



Item Name:	RF Connector	V.S.W.R:	≤ 1.10
Model:	N/F-1-1/4"-CP	Inner plating:	Silver plate
Class:	N-Female	Shell plating:	Silver plate
Frequency:	DC-11GHz	Temperature:	-40°C - +85°C
Impedance:	50 Ω	Durability:	500 Cycles
Match Cable:	1-1/4" Standard Feeder	Waterproof:	IP65,RoHS



Item Name:	RF Connector (Short)	V.S.W.R:	≤ 1.10
Model:	N/M-1-1/4"-CPS	Inner plating:	Silver plate
Class:	N-Male	Shell plating:	Silver plate
Frequency:	DC-11GHz	Temperature:	-40°C - +85°C
Impedance:	50 Ω	Durability:	500 Cycles
Match Cable:	1-1/4" Standard Feeder	Waterproof:	IP65



Item Name:	RF Connector	V.S.W.R:	≤ 1.10
Model:	N/M-1-5/8"-CP	Inner plating:	Silver plate
Class:	N-Male	Shell plating:	Silver plate
Frequency:	DC-11GHz	Temperature:	-40°C - +85°C
Impedance:	50 Ω	Durability:	500 Cycles
Match Cable:	1-5/8" Standard Feeder	Waterproof:	IP65,RoHS



Item Name:	RF Connector	V.S.W.R:	≤ 1.10
Model:	N/F-1-5/8"-CP	Inner plating:	Silver plate
Class:	N-Female	Shell plating:	Nickel or Silver
Frequency:	DC-11GHz	Temperature:	-40°C - +85°C
Impedance:	50 Ω	Durability:	500 Cycles
Match Cable:	1-5/8" Standard Feeder	Waterproof:	IP65, RoHS



Item Name:	RF Connector (Short)	V.S.W.R:	≤ 1.10
Model:	N/F-1-5/8"-CPS	Inner plating:	Silver plate
Class:	N-Female	Shell plating:	Nickel or Silver
Frequency:	DC-11GHz	Temperature:	-40°C - +85°C
Impedance:	50 Ω	Durability:	500 Cycles
Match Cable:	1-5/8" Standard Feeder	Waterproof:	IP65



Item Name:	RF Connector	V.S.W.R:	≤ 1.10
Model:	N/M-RGXXX-CR	Inner plating:	Gilded Plate
Class:	N-Male Crimp type	Shell plating:	Nickel or Silver
Frequency:	DC-11GHz	Temperature:	-40°C - +85°C
Impedance:	50 Ω	Durability:	500 Cycles
Match Cable:	RG174/179/316 Cable	Waterproof:	IP65



Item Name:	RF Connector	V.S.W.R:	≤ 1.10
Model:	N/M-RGXXX-CR	Inner plating:	Gilded Plate
Class:	N-Male Crimp type	Shell plating:	Nickel or Silver
Frequency:	DC-11GHz	Temperature:	-40°C - +85°C
Impedance:	50 Ω	Durability:	500 Cycles
Match Cable:	RG58/59/223 Cable	Waterproof:	IP65



Item Name:	RF Connector	V.S.W.R:	≤ 1.10
Model:	N/F-RGXXX-CR	Inner plating:	Gilded Plate
Class:	N-Female Crimp type	Shell plating:	Nickel or Silver
Frequency:	DC-11GHz	Temperature:	-40°C - +85°C
Impedance:	50 Ω	Durability:	500 Cycles
Match Cable:	RG58/59/223 Cable	Waterproof:	IP65



Item Name: RF Connector
Model: N/M-RGXXX-CR
Class: N-Male Crimp type
Frequency: DC-11GHz
Impedance: 50 Ω
Match Cable: RG8/213/214/LMR400

V.S.W.R: ≤ 1.10
Inner plating: Gilded Plate
Shell plating: Nickel or Silver
Temperature: -40°C - +85°C
Durability: 500 Cycles
Waterproof: IP65



Item Name: RF Connector
Model: N/F-RGXXX-CR
Class: N-Female
Frequency: DC-11GHz
Impedance: 50 Ω
Match Cable: RG8/213/214/LMR400

V.S.W.R: ≤ 1.10
Inner plating: Gilded Plate
Shell plating: Nickel or Silver
Temperature: -40°C - +85°C
Durability: 500 Cycles
Waterproof: IP65



Item Name: Right Angel RF Connector
Model: N/M-RGXXX-CRR
Class: N-Male(RA)
Frequency: DC-11GHz
Impedance: 50 Ω
Match Cable: RG8/213/214/LMR400

V.S.W.R: ≤ 1.15
Inner plating: Gilded Plate
Shell plating: Nickel or Silver
Temperature: -40°C - +85°C
Durability: 500 Cycles
Waterproof: IP65



Item Name: RF Connector
Model: N/M-RGXXX-CP
Class: N-Male
Frequency: DC-11GHz
Impedance: 50 Ω
Match Cable: RG8/213/214/LMR400

V.S.W.R: ≤ 1.10
Inner plating: Gilded Plate
Shell plating: Nickel or Silver
Temperature: -40°C - +85°C
Durability: 500 Cycles
Waterproof: IP65



Item Name: RF Connector
Model: N/F-RGXXX-CP
Class: N-Female
Frequency: DC-11GHz
Impedance: 50 Ω
Match Cable: RG8/213/214/LMR400

V.S.W.R: ≤ 1.10
Inner plating: Gilded Plate
Shell plating: Nickel or Silver
Temperature: -40°C - +85°C
Durability: 500 Cycles
Waterproof: IP65



Item Name: RF Connector
Model: N/M-RGXXX-CPH
Class: N-Male
Frequency: DC-11GHz
Impedance: 50 Ω
Match Cable: RG8/213/214/LMR400

V.S.W.R: ≤ 1.10
Inner plating: Gilded Plate
Shell plating: Nickel or Silver
Temperature: -40°C - +85°C
Durability: 500 Cycles
Waterproof: IP65



Item Name: RF Connector
Model: N/M-RGXXX-CPZ
Class: N-Male
Frequency: DC-11GHz
Impedance: 50 Ω
Match Cable: RG8/213/214/LMR400

V.S.W.R: ≤ 1.10
Inner plating: Gilded Plate
Shell plating: Nickel or Silver
Temperature: $-40^{\circ}\text{C} - +85^{\circ}\text{C}$
Durability: 500 Cycles
Waterproof: IP65



Item Name: RF Connector
Model: N/F-RGXXX-BH
Class: N-Female Bulkhead
Frequency: DC-11GHz
Impedance: 50 Ω
Match Cable: RG174/316 Cable

V.S.W.R: ≤ 1.10
Inner plating: Silver Plate
Shell plating: Nickel or Silver
Temperature: $-40^{\circ}\text{C} - +85^{\circ}\text{C}$
Durability: 500 Cycles
Waterproof: IP65



Item Name: RF Connector
Model: N/M-RGXXX-CRH
Class: N-Male
Frequency: DC-11GHz
Impedance: 50 Ω
Match Cable: RG401/402/142 Cable

V.S.W.R: ≤ 1.10
Inner plating: Silver Plate
Shell plating: Nickel or Silver
Temperature: $-40^{\circ}\text{C} - +85^{\circ}\text{C}$
Durability: 500 Cycles
Waterproof: IP68,RoHS

4.RF ADAPTERS





Item Name:	RF Adapter	V.S.W.R:	$\leq 1.10(\text{DC-3G})$
Model:	DIN/M-DIN/M	Inner plating:	Silver plate
Class:	Adapter	Shell plating:	Silver or Tri-Plate
Frequency:	DC-7.5GHz	Temperature:	$-40^{\circ}\text{C} - +85^{\circ}\text{C}$
Impedance:	50 Ω	Pluggable Force:	$\geq 0.6\text{N}$
PIM 3:	163 dBc	Durability:	500 Cycles



Item Name:	RF Adapter	V.S.W.R:	$\leq 1.10(\text{DC-3G})$
Model:	DIN/F-DIN/F	Inner plating:	Silver plate
Class:	Adapter	Shell plating:	Silver or Tri-Plate
Frequency:	DC-7.5GHz	Temperature:	$-40^{\circ}\text{C} - +85^{\circ}\text{C}$
Impedance:	50 Ω	Pluggable Force:	$\geq 0.6\text{N}$
PIM 3:	163 dBc	Durability:	500 Cycles



Item Name:	RF Adapter	V.S.W.R:	$\leq 1.10(\text{DC-3G})$
Model:	DIN/M-N/M	Inner plating:	Silver plate
Class:	Adapter	Shell plating:	Silver or Tri-Plate
Frequency:	DC-7.5GHz	Temperature:	$-40^{\circ}\text{C} - +85^{\circ}\text{C}$
Impedance:	50 Ω	Pluggable Force:	$\geq 0.56\text{N}$
PIM 3:	163dBc	Durability:	500 Cycles



Item Name:	RF Adapter	V.S.W.R:	$\leq 1.10(\text{DC-3G})$
Model:	DIN/M-N/F	Inner plating:	Silver plate
Class:	Adapter	Shell plating:	Silver or Tri-Plate
Frequency:	DC-7.5GHz	Temperature:	$-40^{\circ}\text{C} - +85^{\circ}\text{C}$
Impedance:	50 Ω	Pluggable Force:	$\geq 0.56\text{N}$
PIM 3:	163 dBc	Durability:	500 Cycles



Item Name:	RF Adapter	V.S.W.R:	$\leq 1.10(\text{DC-3G})$
Model:	DIN/F-N/M	Inner plating:	Silver plate
Class:	Adapter	Shell plating:	Silver or Tri-Plate
Frequency:	DC-7.5GHz	Temperature:	$-40^{\circ}\text{C} - +85^{\circ}\text{C}$
Impedance:	50 Ω	Pluggable Force:	$\geq 0.56\text{N}$
PIM 3:	163 dBc	Durability:	500 Cycles



Item Name:	RF Adapter	V.S.W.R:	$\leq 1.10(\text{DC-3G})$
Model:	DIN/F-N/F	Inner plating:	Silver plate
Class:	Adapter	Shell plating:	Silver or Tri-Plate
Frequency:	DC-7.5GHz	Temperature:	$-40^{\circ}\text{C} - +85^{\circ}\text{C}$
Impedance:	50 Ω	Pluggable Force:	$\geq 0.56\text{N}$
PIM 3:	163 dBc	Durability:	500 Cycles



Item Name:	RF Adapter	V.S.W.R:	$\leq 1.10(\text{DC-3G})$
Model:	N/M-N/M	Inner plating:	Silver plate
Class:	Adapter	Shell plating:	Silver or Tri-Plate
Frequency:	DC-11GHz	Temperature:	$-55^{\circ}\text{C} - +155^{\circ}\text{C}$
Impedance:	50 Ω	Pluggable Force:	$\geq 0.56\text{N}$
PIM 3:	153 dBc	Durability:	500 Cycles



Item Name:	RF Adapter	V.S.W.R:	$\leq 1.10(\text{DC-3G})$
Model:	N/F-N/F	Inner plating:	Silver plate
Class:	Adapter	Shell plating:	Silver or Tri-Plate
Frequency:	DC-11GHz	Temperature:	$-55^{\circ}\text{C} - +155^{\circ}\text{C}$
Impedance:	50 Ω	Pluggable Force:	$\geq 0.56\text{N}$
PIM 3:	153 dBc	Durability:	500 Cycles



Item Name:	RF Adapter	V.S.W.R:	$\leq 1.15(\text{DC-3G})$
Model:	N/M-N/F(RA)	Inner plating:	Silver plate
Class:	Adapter Right Angle	Shell plating:	Silver or Tri-Plate
Frequency:	DC-11GHz	Temperature:	$-55^{\circ}\text{C} - +155^{\circ}\text{C}$
Impedance:	50 Ω	Pluggable Force:	$\geq 0.56\text{N}$
PIM 3:	153 dBc	Durability:	500 Cycles



Item Name:	RF Adapter	V.S.W.R:	$\leq 1.10(\text{DC-3G})$
Model:	N/M-SMA/M	Inner plating:	Gilded
Class:	Adapter	Shell plating:	Nickel plate
Frequency:	DC-11GHz	Temperature:	$-55^{\circ}\text{C} - +155^{\circ}\text{C}$
Impedance:	50 Ω	Pluggable Force:	$\geq 0.56\text{N}$
PIM 3:	153 dBc	Durability:	500 Cycles



Item Name:	RF Adapter	V.S.W.R:	$\leq 1.10(\text{DC-3G})$
Model:	N/F-SMA/M	Inner plating:	Gilded
Class:	Adapter	Shell plating:	Nickel plate
Frequency:	DC-11GHz	Temperature:	$-55^{\circ}\text{C} - +155^{\circ}\text{C}$
Impedance:	50 Ω	Pluggable Force:	$\geq 0.56\text{N}$
PIM 3:	153 dBc	Durability:	500 Cycles



Item Name:	RF Adapter	V.S.W.R:	$\leq 1.10(\text{DC-3G})$
Model:	N/M-SMA/F	Inner plating:	Gilded
Class:	Adapter	Shell plating:	Nickel plate
Frequency:	DC-11GHz	Temperature:	$-55^{\circ}\text{C} - +155^{\circ}\text{C}$
Impedance:	50 Ω	Pluggable Force:	$\geq 0.56\text{N}$
PIM 3:	153 dBc	Durability:	500 Cycles



Item Name:	RF Adapter	V.S.W.R:	≤ 1.10(DC-3G)
Model:	N/F-SMA/F	Inner plating:	Gilded
Class:	Adapter	Shell plating:	Nickel plate
Frequency:	DC-11GHz	Temperature:	-55°C - +155°C
Impedance:	50 Ω	Pluggable Force:	≥ 0.56N
PIM 3:	153 dBc	Durability:	500 Cycles



Item Name:	RF Adapter	V.S.W.R:	≤ 1.10(DC-3G)
Model:	SMA/M-SMA/M	Inner plating:	Gilded
Class:	Adapter	Shell plating:	Gilded
Frequency:	DC-11GHz	Temperature:	-55°C - +155°C
Impedance:	50 Ω	Pluggable Force:	≥ 0.56N
PIM 3:	153 dBc	Durability:	500 Cycles

5.1.6/5.6(L9) SERIES RF CONNECTORS



Item Name:	1.6/5.6(L9) Connector	V.S.W.R:	≤ 1.30
Model:	L9/M-BT3002-CR	Work Voltage:	330V(MAX)
Class:	1.6/5.6 Male Crimp type	Insulation:	≥1000 MΩ
Frequency:	DC-1GHz	Inner plating:	Gilded Plate
Impedance:	75 Ω	Temperature:	-40°C - +85°C
Match Cable:	SY75/BT3002 Cable	Durability:	500 Cycles



Item Name:	1.6/5.6(L9) Connector	V.S.W.R:	≤ 1.30
Model:	L9/F-BT3002-CR	Work Voltage:	330V(MAX)
Class:	1.6/5.6 Female Crimp type	Insulation:	≥1000 MΩ
Frequency:	DC-1GHz	Inner plating:	Gilded Plate
Impedance:	75 Ω	Temperature:	-40°C - +85°C
Match Cable:	SY75/BT3002 Cable	Durability:	500 Cycles



Item Name:	1.6/5.6(L9) Connector	V.S.W.R:	≤ 1.30
Model:	L9/M-BT3002-SD	Work Voltage:	330V(MAX)
Class:	1.6/5.6 Male Solder type	Insulation:	≥1000 MΩ
Frequency:	DC-1GHz	Inner plating:	Gilded Plate
Impedance:	75 Ω	Temperature:	-40°C - +85°C
Match Cable:	SY75/BT3002 Cable	Durability:	500 Cycles

	<p>Item Name: 1.6/5.6(L9) Connector Model: L9/F-BT3002-SD Class: 1.6/5.6 Female Solder type Frequency: DC-1GHz Impedance: 75 Ω Match Cable: SY75/BT3002 Cable</p>	<p>V.S.W.R: ≤ 1.30 Work Voltage: 330V(MAX) Insulation: ≥1000 MΩ Inner plating: Gilded Plate Temperature: -40°C - +85°C Durability: 500 Cycles</p>
	<p>Item Name: 1.6/5.6(L9) Connector(RA) Model: L9/M-BT3002-CPR Class: 1.6/5.6 Male Solder type Frequency: DC-1GHz Impedance: 75 Ω Match Cable: SY75/BT3002 Cable</p>	<p>V.S.W.R: ≤ 1.50 Work Voltage: 330V(MAX) Insulation: ≥1000 MΩ Inner plating: Gilded Plate Temperature: -40°C - +85°C Durability: 500 Cycles</p>
	<p>Item Name: 1.6/5.6(L9) Connector(RA) Model: L9/M-BT3002-CRR Class: 1.6/5.6 Male Crimp type Frequency: DC-1GHz Impedance: 75 Ω Match Cable: SY75/BT3002 Cable</p>	<p>V.S.W.R: ≤ 1.30 Work Voltage: 330V(MAX) Insulation: ≥1000 MΩ Inner plating: Gilded Plate Temperature: -40°C - +85°C Durability: 500 Cycles</p>
	<p>Item Name: 1.6/5.6(L9) Connector(RA) Model: L9/F-BT3002-CRR Class: 1.6/5.6 Female Crimp type Frequency: DC-1GHz Impedance: 75 Ω Match Cable: SY75/BT3002 Cable</p>	<p>V.S.W.R: ≤ 1.50 Work Voltage: 330V(MAX) Insulation: ≥1000 MΩ Inner plating: Gilded Plate Temperature: -40°C - +85°C Durability: 500 Cycles</p>
	<p>Item Name: 1.6/5.6(L9) Adapter Model: L9-F/F Class: 1.6/5.6 Female Adapter Frequency: DC-1GHz Impedance: 75 Ω Remark: With Grounding Lug</p>	<p>V.S.W.R: ≤ 1.30 Work Voltage: 330V(MAX) Insulation: ≥1000 MΩ Inner plating: Gilded Plate Temperature: -40°C - +85°C Durability: 500 Cycles</p>
	<p>Item Name: 1.6/5.6(L9) Adapter Model: L9-G-F/F Class: 1.6/5.6 Female Adapter Frequency: DC-1GHz Impedance: 75 Ω Remark: Without Grounding Lug</p>	<p>V.S.W.R: ≤ 1.30 Work Voltage: 330V(MAX) Insulation: ≥1000 MΩ Inner plating: Gilded Plate Temperature: -40°C - +85°C Durability: 500 Cycles</p>
	<p>Item Name: 1.6/5.6 Male U-Link (Test) Model: L9-T-M/M Class: 1.6/5.6 Male U-Link Frequency: DC-1GHz Impedance: 75 Ω Remark: With Test Hole</p>	<p>V.S.W.R: ≤ 1.30 Work Voltage: 330V(MAX) Insulation: ≥1000 MΩ Inner plating: Gilded Plate Temperature: -40°C - +85°C Durability: 500 Cycles</p>



Item Name: 1.6/5.6 Male U-Link
 Model: L9-M/M
 Class: 1.6/5.6 Male U-Link
 Frequency: DC-1GHz
 Impedance: 75 Ω
 Remark: Without Test Hole

V.S.W.R: ≤ 1.30
 Work Voltage: 330V(MAX)
 Insulation: $\geq 1000 \text{ M}\Omega$
 Inner plating: Gilded Plate
 Temperature: $-40^{\circ}\text{C} - +85^{\circ}\text{C}$
 Durability: 500 Cycles



Item Name: 1.6/5.6(L9) Balun
 Model: L9/M-BALU
 Class: 1.6/5.6 Male Balun
 Frequency: DC-1GHz
 Impedance: 75 Ω
 Remark: 75 Ω - 120 Ω

V.S.W.R: ≤ 1.30
 Work Voltage: 330V(MAX)
 Insulation: $\geq 1000 \text{ M}\Omega$
 Inner plating: Gilded Plate
 Temperature: $-40^{\circ}\text{C} - +85^{\circ}\text{C}$
 Durability: 500 Cycles



Item Name: 1.6/5.6(L9) Balun
 Model: L9/F-BALU
 Class: 1.6/5.6 Female Balun
 Frequency: DC-1GHz
 Impedance: 75 Ω
 Remark: 75 Ω - 120 Ω

V.S.W.R: ≤ 1.30
 Work Voltage: 330V(MAX)
 Insulation: $\geq 1000 \text{ M}\Omega$
 Inner plating: Gilded Plate
 Temperature: $-40^{\circ}\text{C} - +85^{\circ}\text{C}$
 Durability: 500 Cycles

6.N SERIES TERMINATOR (DUMMY LOAD)



Item Name: Precision Terminator
 Model: TE-PR-3GNM
 Frequency: DC-3000MHz
 Impedance: 50 Ω
 Connector: N-Male

V.S.W.R: ≤ 1.02
 Temperature: $-55^{\circ}\text{C} - +125^{\circ}\text{C}$
 Inner Plating: Gilded Plate
 Body Plating: Silver Plate
 Annotation: Calibration/Test Use



Item Name: Precision Terminator
 Model: TE-PR-3GNM
 Frequency: DC-6000MHz
 Impedance: 50 Ω
 Connector: N-Male

V.S.W.R: ≤ 1.04
 Temperature: $-55^{\circ}\text{C} - +125^{\circ}\text{C}$
 Inner Plating: Gilded Plate
 Body Plating: Silver Plate
 Annotation: Calibration/Test Use



Item Name: Terminator(Dummy Load)
 Model: TE(DL)-1W-3GNC
 Frequency: DC-3000MHz
 Impedance: 50 Ω
 Connector: N-Male
 Power: 1W (Average)

V.S.W.R: ≤ 1.15
 Temperature: $-40^{\circ}\text{C} - +55^{\circ}\text{C}$
 Inner Plating: Silver Plate
 Body Plating: Nickel Plate
 Radiator: Copper
 Annotation: Indoor/Outdoor Use



Item Name:	Terminator(Dummy Load)	V.S.W.R:	≤ 1.15
Model:	TE(DL)-2W-3GN	Temperature:	$-35^{\circ}\text{C} - +55^{\circ}\text{C}$
Frequency:	DC-3000MHZ	Inner Plating:	Silver Plate
Impedance:	50 Ω	Body Plating:	Black
Connector:	N-Male/Female	Radiator:	Alumina, RoHS, IP65
Power:	2W (Average)	Annotation:	Indoor/Outdoor Use



Item Name:	Terminator(Dummy Load)	V.S.W.R:	≤ 1.15
Model:	TE(DL)-5W-3GN	Temperature:	$-35^{\circ}\text{C} - +55^{\circ}\text{C}$
Frequency:	DC-3000MHZ	Inner Plating:	Silver Plate
Impedance:	50 Ω	Body Plating:	Black
Connector:	N-Male/Female	Radiator:	Alumina, RoHS, IP65
Power:	5 W (Average)	Annotation:	Indoor/Outdoor Use



Item Name:	Terminator(Dummy Load)	V.S.W.R:	≤ 1.15
Model:	TE(DL)-10W-3GN	Temperature:	$-35^{\circ}\text{C} - +55^{\circ}\text{C}$
Frequency:	DC-3000MHZ	Inner Plating:	Silver Plate
Impedance:	50 Ω	Body Plating:	Black
Connector:	N-Male/Female	Radiator:	Alumina, RoHS, IP65
Power:	10 W (Average)	Annotation:	Indoor/Outdoor Use



Item Name:	Terminator(Dummy Load)	V.S.W.R:	≤ 1.15
Model:	TE(DL)-15W-3GN	Temperature:	$-35^{\circ}\text{C} - +55^{\circ}\text{C}$
Frequency:	DC-3000MHZ	Inner Plating:	Silver Plate
Impedance:	50 Ω	Body Plating:	Black
Connector:	N-Male/Female	Radiator:	Alumina, RoHS, IP65
Power:	15 W (Average)	Annotation:	Indoor/Outdoor Use



Item Name:	Terminator(Dummy Load)	V.S.W.R:	≤ 1.15
Model:	TE(DL)-20W-3GN	Temperature:	$-35^{\circ}\text{C} - +55^{\circ}\text{C}$
Frequency:	DC-3000MHZ	Inner Plating:	Silver Plate
Impedance:	50 Ω	Body Plating:	Black
Connector:	N-Male/Female	Radiator:	Alumina, RoHS, IP65
Power:	20 W (Average)	Annotation:	Indoor/Outdoor Use



Item Name:	Terminator(Dummy Load)	V.S.W.R:	≤ 1.15
Model:	TE(DL)-30W-3GN	Temperature:	$-35^{\circ}\text{C} - +55^{\circ}\text{C}$
Frequency:	DC-3000MHZ	Inner Plating:	Silver Plate
Impedance:	50 Ω	Body Plating:	Black
Connector:	N-Male/Female	Radiator:	Alumina, RoHS, IP65
Power:	30 W (Average)	Annotation:	Indoor/Outdoor Use



Item Name:	Terminator(Dummy Load)	V.S.W.R:	≤ 1.15
Model:	TE(DL)-50W-3GN	Temperature:	-35°C - +55°C
Frequency:	DC-3000MHz	Inner Plating:	Silver Plate
Impedance:	50 Ω	Body Plating:	Black
Connector:	N-Male/Female	Radiator:	Alumina, RoHS, IP65
Power:	50 W (Average)	Annotation:	Indoor/Outdoor Use



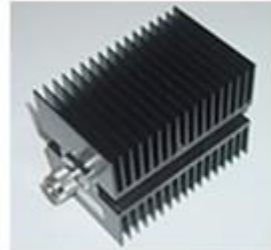
Item Name:	Terminator(Dummy Load)	V.S.W.R:	≤ 1.15
Model:	TE(DL)-50W-3GNQ	Temperature:	-40°C - +85°C
Frequency:	DC-3000MHz	Inner Plating:	Silver Plate
Impedance:	50 Ω	Body Plating:	Black
Connector:	N-Male/Female	Radiator:	Alumina, RoHS
Power:	50 W (Average)	Annotation:	Indoor/Outdoor Use



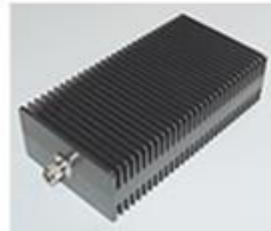
Item Name:	Terminator(Dummy Load)	V.S.W.R:	≤ 1.25
Model:	TE(DL)-100W-3GNQ	Temperature:	-40°C - +85°C
Frequency:	DC-3000MHz	Inner Plating:	Silver Plate
Impedance:	50 Ω	Body Plating:	Black
Connector:	N-Male/Female	Radiator:	Alumina, RoHS
Power:	100 W (Average)	Annotation:	Indoor/Outdoor Use



Item Name:	Terminator(Dummy Load)	V.S.W.R:	≤ 1.25
Model:	TE(DL)-100W-3GNQ(W)	Temperature:	-35°C - +50°C
Frequency:	DC-3000MHz	Inner Plating:	Silver Plate
Impedance:	50 Ω	Body Plating:	Black or Plain
Connector:	N-Male/Female	Radiator:	Alumina, RoHS
Power:	100 W (Average)	Annotation:	Indoor/Outdoor Use



Item Name:	Terminator(Dummy Load)	V.S.W.R:	≤ 1.30
Model:	TE(DL)-150W-2.5GNQ	Temperature:	-35°C - +55°C
Frequency:	DC-2500MHz	Inner Plating:	Silver Plate
Impedance:	50 Ω	Body Plating:	Black
Connector:	N-Male/Female	Radiator:	Alumina, RoHS
Power:	150 W (Average)	Annotation:	Indoor/Outdoor Use



Item Name:	Terminator(Dummy Load)	V.S.W.R:	≤ 1.30
Model:	TE(DL)-300W-2.5GNQ	Temperature:	-35°C - +85°C
Frequency:	DC-2500MHz	Inner Plating:	Silver Plate
Impedance:	50 Ω	Body Plating:	Black
Connector:	N-Male/Female	Radiator:	Alumina, RoHS
Power:	300 W (Average)	Annotation:	Indoor/Outdoor Use

7.SMA SERIES TERMINATOR (DUMMY LOAD)



Item Name:	Terminator(Dummy Load)	V.S.W.R:	≤ 1.10
Model:	TE(DL)-1W-3GSM-S	Temperature:	$-35^{\circ}\text{C} - +85^{\circ}\text{C}$
Frequency:	DC-3000MHz	Inner Plating:	Gilded
Impedance:	50 Ω	Body Material:	Stainless Steel
Connector:	SMA-Male	Radiator:	Stainless Steel
Power:	1 W (Average)	Annotation:	Indoor/Outdoor Use



Item Name:	Terminator(Dummy Load)	V.S.W.R:	≤ 1.10
Model:	TE(DL)-1W-3GSM-G	Temperature:	$-35^{\circ}\text{C} - +85^{\circ}\text{C}$
Frequency:	DC-3000MHz	Inner Plating:	Gilded
Impedance:	50 Ω	Body Plating:	Gilded
Connector:	SMA-Male	Radiator:	Copper
Power:	1 W (Average)	Annotation:	Indoor/Outdoor Use



Item Name:	Terminator(Dummy Load)	V.S.W.R:	≤ 1.15
Model:	TE(DL)-2W-3GSM	Temperature:	$-35^{\circ}\text{C} - +85^{\circ}\text{C}$
Frequency:	DC-3000MHz	Inner Plating:	Silver Plate
Impedance:	50 Ω	Body Plating:	Black
Connector:	SMA-Male/Female	Radiator:	Alumina, RoHS, IP65
Power:	2 W (Average)	Annotation:	Indoor/Outdoor Use



Item Name:	Terminator(Dummy Load)	V.S.W.R:	≤ 1.15
Model:	TE(DL)-5W-3GSM	Temperature:	$-35^{\circ}\text{C} - +85^{\circ}\text{C}$
Frequency:	DC-3000MHz	Inner Plating:	Silver Plate
Impedance:	50 Ω	Body Plating:	Black
Connector:	SMA-Male/Female	Radiator:	Alumina, RoHS, IP65
Power:	5 W (Average)	Annotation:	Indoor/Outdoor Use



Item Name:	Terminator(Dummy Load)	V.S.W.R:	≤ 1.15
Model:	TE(DL)-10W-3GSM	Temperature:	$-35^{\circ}\text{C} - +85^{\circ}\text{C}$
Frequency:	DC-3000MHz	Inner Plating:	Silver Plate
Impedance:	50 Ω	Body Plating:	Black
Connector:	SMA-Male/Female	Radiator:	Alumina, RoHS, IP65
Power:	10 W (Average)	Annotation:	Indoor/Outdoor Use

8.7/16(DIN) TERMINATOR (DUMMY LOAD)



Item Name:	Terminator(Dummy Load)	V.S.W.R:	≤ 1.15
Model:	TE(DL)-2W-3GD	Temperature:	$-35^{\circ}\text{C} - +55^{\circ}\text{C}$
Frequency:	DC-3000MHz	Inner Plating:	Silver Plate
Impedance:	50 Ω	Body Plating:	Black
Connector:	7/16(DIN)-Male/Female	Radiator:	Copper, RoHS, IP65
Power:	2W (Average)	Annotation:	Indoor/Outdoor Use



Item Name:	Terminator(Dummy Load)	V.S.W.R:	≤ 1.15
Model:	TE(DL)-5W-3GD	Temperature:	$-35^{\circ}\text{C} - +55^{\circ}\text{C}$
Frequency:	DC-3000MHz	Inner Plating:	Silver Plate
Impedance:	50 Ω	Body Plating:	Black
Connector:	7/16(DIN)-Male/Female	Radiator:	Copper, RoHS, IP65
Power:	5W (Average)	Annotation:	Indoor/Outdoor Use



Item Name:	Terminator(Dummy Load)	V.S.W.R:	≤ 1.15
Model:	TE(DL)-10W-3GD	Temperature:	$-35^{\circ}\text{C} - +55^{\circ}\text{C}$
Frequency:	DC-3000MHz	Inner Plating:	Silver Plate
Impedance:	50 Ω	Body Plating:	Black
Connector:	7/16(DIN)-Male/Female	Radiator:	Copper, RoHS, IP65
Power:	10W (Average)	Annotation:	Indoor/Outdoor Use



Item Name:	Terminator(Dummy Load)	V.S.W.R:	≤ 1.15
Model:	TE(DL)-20W-3GD	Temperature:	$-35^{\circ}\text{C} - +55^{\circ}\text{C}$
Frequency:	DC-3000MHz	Inner Plating:	Silver Plate
Impedance:	50 Ω	Body Plating:	Black
Connector:	7/16(DIN)-Male/Female	Radiator:	Alumina, RoHS, IP65
Power:	20W (Average)	Annotation:	Indoor/Outdoor Use



Item Name:	Terminator(Dummy Load)	V.S.W.R:	≤ 1.15
Model:	TE(DL)-25W-3GD	Temperature:	$-35^{\circ}\text{C} - +55^{\circ}\text{C}$
Frequency:	DC-3000MHz	Inner Plating:	Silver Plate
Impedance:	50 Ω	Body Plating:	Black
Connector:	7/16(DIN)-Male/Female	Radiator:	Alumina, RoHS, IP65
Power:	25 W (Average)	Annotation:	Indoor/Outdoor Use



Item Name:	Terminator(Dummy Load)	V.S.W.R:	≤ 1.15
Model:	TE(DL)-30W-3GD	Temperature:	$-35^{\circ}\text{C} - +50^{\circ}\text{C}$
Frequency:	DC-3000MHz	Inner Plating:	Silver Plate
Impedance:	50 Ω	Body Plating:	Black
Connector:	7/16(DIN)-Male/Female	Radiator:	Alumina, RoHS, IP65
Power:	30 W (Average)	Annotation:	Indoor/Outdoor Use



Item Name:	Terminator(Dummy Load)	V.S.W.R:	≤ 1.15
Model:	TE(DL)-50W-3GD	Temperature:	$-35^{\circ}\text{C} - +50^{\circ}\text{C}$
Frequency:	DC-3000MHz	Inner Plating:	Silver Plate
Impedance:	50 Ω	Body Plating:	Black
Connector:	7/16(DIN)-Male/Female	Radiator:	Alumina, RoHS, IP65
Power:	50 W (Average)	Annotation:	Indoor/Outdoor Use



Item Name:	Terminator(Dummy Load)	V.S.W.R:	≤ 1.15
Model:	TE(DL)-100W-3GD(W)	Temperature:	$-35^{\circ}\text{C} - +50^{\circ}\text{C}$
Frequency:	DC-3000MHz	Inner Plating:	Silver Plate
Impedance:	50 Ω	Body Plating:	Black or Plain
Connector:	7/16(DIN)-Male/Female	Radiator:	Alumina, RoHS, IP65
Power:	100 W (Average)	Annotation:	Indoor/Outdoor Use

9.OPEN/SHORT LOAD



Item Name:	Open Load	V.S.W.R:	≥ 100
Model:	OPD-3GN	Temperature:	$-40^{\circ}\text{C} - +85^{\circ}\text{C}$
Frequency:	DC-3000MHz	Inner Plating:	-----
Impedance:	50 Ω	Body Plating	Silver Plate
Connector:	N Type	Radiator:	Copper



Item Name:	Open Load	V.S.W.R:	≥ 100
Model:	OPD-3.2GN	Temperature:	$-40^{\circ}\text{C} - +85^{\circ}\text{C}$
Frequency:	DC-3200MHz	Inner Plating:	-----
Impedance:	50 Ω	Body Plating	Silver Plate
Connector:	N Type	Radiator:	Copper



Item Name:	Open Load	V.S.W.R:	≥ 100
Model:	OPD-6GN	Temperature:	$-40^{\circ}\text{C} - +85^{\circ}\text{C}$
Frequency:	DC-6000MHz	Inner Plating:	-----
Impedance:	50 Ω	Body Plating	Silver Plate
Connector:	N Type	Radiator:	Copper



Item Name:	Short Load	V.S.W.R:	≥ 100
Model:	SHD-3GN	Temperature:	$-40^{\circ}\text{C} - +85^{\circ}\text{C}$
Frequency:	DC-3000MHz	Inner Plating:	Silver Plate
Impedance:	50 Ω	Body Plating:	Silver Plate
Connector:	N Type	Radiator:	Copper



Item Name:	Short Load	V.S.W.R:	≥ 100
Model:	SHD-3.2GN	Temperature:	$-40^{\circ}\text{C} - +125^{\circ}\text{C}$
Frequency:	DC-3200MHz	Inner Plating:	Silver Plate
Impedance:	50 Ω	Body Plating:	Silver Plate
Connector:	N Type	Radiator:	Copper



Item Name:	Short Load	V.S.W.R:	≥ 100
Model:	SHD-6GN	Temperature:	$-40^{\circ}\text{C} - +85^{\circ}\text{C}$
Frequency:	DC-6000MHz	Inner Plating:	Silver Plate
Impedance:	50 Ω	Body Plating:	Silver Plate
Connector:	N Type	Radiator:	Copper

10.COMBINER



Item Name:	Dual Band Combiner	Pass Band Ripple:	≤ 0.2 dB
Model:	CMB-2IN-GD-NF	Insertion Loss:	≤ 0.4 dB
Frequency:	885-909,1710-1880MHz	Impedance:	50 Ω
V.S.W.R:	≤ 1.22	Temperature:	$-40^{\circ}\text{C} - +80^{\circ}\text{C}$
Power:	100W Average	Connector:	N-Female
Outside Band Rejection(dB):	$\geq 80@1710-1880\text{MHz}$	Annotation:	Indoor Use
	$\geq 80@885-909\text{MHz}$	Environment:	RoHS Compliant



Item Name:	Dual Band Combiner	Pass Band Ripple:	≤ 0.2 dB
Model:	CMB-2IN-CGDPW-NF	Insertion Loss:	≤ 0.4 dB
Frequency:	800-2200,2400-2500MHz	Impedance:	50 Ω
V.S.W.R:	≤ 1.22	Temperature:	$-40^{\circ}\text{C} - +80^{\circ}\text{C}$
Power:	100W Average	Connector:	N-Female
Outside Band Rejection(dB):	$\geq 90@2400-2500\text{MHz}$	Annotation:	Indoor Use
	$\geq 90@800-2200\text{MHz}$	Environment:	RoHS Compliant



Item Name:	Dual Band Combiner	Pass Band Ripple:	≤ 0.2 dB
Model:	CBM-2IN-DW-NF	Insertion Loss:	≤ 0.6 dB
Frequency:	824-880,909-960MHz	Impedance:	50 Ω
V.S.W.R:	≤ 1.25	Temperature:	$-40^{\circ}\text{C} - +80^{\circ}\text{C}$
Power:	200W Average	Connector:	N-Female
Outside Band Rejection(dB):	$\geq 80@909-960\text{MHz}$	Annotation:	Indoor Use
	$\geq 80@824-880\text{MHz}$	Environment:	RoHS Compliant



Item Name:	Triplexer Band Combiner	Pass Band Ripple:	≤ 0.5 dB
Model:	CBM-2IN-GD-NF	Insertion Loss:	≤ 0.8 dB
Frequency:	1710-1880,2110-2170MHz	Impedance:	50 Ω
V.S.W.R:	≤ 1.22	Temperature:	-40°C - +80°C
Power:	100W Average	Connector:	N-Female
Outside Band Rejection(dB):	≥80@2110-2170MHz	Annotation:	Indoor Use
	≥80@1710-1880MHz	Environment:	RoHS Compliant



Item Name:	Triplexer Band Combiner	Pass Band Ripple:	≤ 0.3 dB
Model:	CBM-3IN-CDW-NF	Insertion Loss:	≤ 0.3 dB
Frequency Range:	824-880 MHz	Impedance:	50 Ω
	1745-1850 MHz	Temperature:	-40°C - +80°C
	2400-2500 MHz	Connector:	N-Female
V.S.W.R:	≤ 1.22	Annotation:	Indoor Use
Power:	200W Average	Environment:	RoHS Compliant



Item Name:	Triplexer Band Combiner	Pass Band Ripple:	≤ 0.4 dB
Model:	CBM-3IN-EGDW-NF	Insertion Loss:	≤ 0.3 dB
Frequency Range:	885-960 MHz	Impedance:	50 Ω
	1710-1880 MHz	Temperature:	-40°C - +80°C
	1920-2170 MHz	Connector:	N-Female
V.S.W.R:	≤ 1.25	Annotation:	Indoor Use
Power:	200W Average	Environment:	RoHS Compliant



Item Name:	Triplexer Band Combiner	Pass Band Ripple:	≤ 0.3 dB
Model:	CBM-3IN-EGDW-NF	Insertion Loss:	≤ 0.4,0.6,0.6 dB
Frequency Range:	885-960 MHz	Impedance:	50 Ω
	1710-1850 MHz	Temperature:	-40°C - +80°C
	1920-2170 MHz	Connector:	N-Female
V.S.W.R:	≤ 1.22	Annotation:	Indoor Use
Power:	100W Average	Environment:	RoHS Compliant



Item Name:	Four Band Combiner	Power:	100W Average
Model:	CBM-4IN-CGDW-NF	Pass Band Ripple:	≤ 0.3 dB
Frequency Range:	825-880 MHz	Impedance:	50 Ω
	890-960 MHz	Temperature:	-40°C - +80°C
	1710-1850 MHz	Connector:	N-Female
	1920-2170 MHz	Annotation:	Indoor Use
V.S.W.R:	≤ 1.22	Environment:	RoHS Compliant

11. DUPLEXER



Item Name:	N Duplexer	Pass Band Ripple:	≤ 1.0 dB
Model:	DP-88.96-150W-2NF	Insertion Loss:	≤ 1.6 dB
Frequency Range:	Rx.880-910 MHz	Impedance:	50 Ω
	Tx.925-960 MHz	Temperature:	-40°C - +80°C
V.S.W.R:	≤ 1.25	Connector:	N-Female
Power:	150W Average	Annotation:	Indoor Use



Item Name:	7/16(DIN) Duplexer	Pass Band Ripple:	≤ 0.8 dB
Model:	DP-76.86-200W-2DF	Insertion Loss:	≤ 1.6 dB
Frequency Range:	Rx.764-800 MHz	Impedance:	50 Ω
	Tx.806-869 MHz	Temperature:	-40°C - +55°C
V.S.W.R:	≤ 1.25	Connector:	7/16(DIN)-Female
Power:	200W Average	Annotation:	Indoor/Outdoor Use

12. POWER TAPPER



800-2500MHz Power Tapper



Item Name:	Cavity Type Power Tapper	Mailine Loss:	1.65±0.5 dB
Model:	PT-825-200-5CNI	Insertion Loss:	0.10 dB
Frequency:	800-2500MHz	Impedance:	50 Ω
Coupling:	5±0.8 dB	Temperature:	-35°C - +75°C
Power:	200W Average	Connector:	N-Female
PIM:(dBc)	-150dBc , 2X43dBm	Annotation:	Indoor/Outdoor Use
V.S.W.R:	≤ 1.35	Environment:	IP65 , RoHS



Item Name:	Cavity Type Power Tapper	Mailine Loss:	1.26±0.4 dB
Model:	PT-825-200-6CNI	Insertion Loss:	0.10 dB
Frequency:	800-2500MHz	Impedance:	50 Ω
Coupling:	6±0.8 dB	Temperature:	-35°C - +75°C
Power:	200W Average	Connector:	N-Female
PIM:(dBc)	-150dBc , 2X43dBm	Annotation:	Indoor/Outdoor Use
V.S.W.R:	≤ 1.35	Environment:	IP65 , RoHS



Item Name:	Cavity Type Power Tapper	Mailine Loss:	1.00±0.3 dB
Model:	PT-825-200-7CNI	Insertion Loss:	0.10 dB
Frequency:	800-2500MHz	Impedance:	50 Ω
Coupling:	7±0.8 dB	Temperature:	-35°C - +75°C
Power:	200W Average	Connector:	N-Female
PIM:(dBc)	-150dBc , 2X43dBm	Annotation:	Indoor/Outdoor Use
V.S.W.R:	≤ 1.35	Environment:	IP65 , RoHS



Item Name:	Cavity Type Power Tapper	Mailine Loss:	0.46±0.3 dB
Model:	PT-825-200-10CNI	Insertion Loss:	0.10 dB
Frequency:	800-2500MHz	Impedance:	50 Ω
Coupling:	10±1.0 dB	Temperature:	-35°C - +75°C
Power:	200W Average	Connector:	N-Female
PIM:(dBc)	-150dBc , 2X43dBm	Annotation:	Indoor/Outdoor Use
V.S.W.R:	≤ 1.35	Environment:	IP65 , RoHS



Item Name:	Cavity Type Power Tapper	Mailine Loss:	0.20±0.2 dB
Model:	PT-825-200-15CNI	Insertion Loss:	0.10 dB
Frequency:	800-2500MHz	Impedance:	50 Ω
Coupling:	15±1.20 dB	Temperature:	-35°C - +75°C
Power:	200W Average	Connector:	N-Female
PIM:(dBc)	-150dBc , 2X43dBm	Annotation:	Indoor/Outdoor Use
V.S.W.R:	≤ 1.35	Environment:	IP65 , RoHS



Item Name:	Cavity Type Power Tapper	Mailine Loss:	0.10±0.1dB
Model:	PT-825-200-20CNI	Insertion Loss:	0.10 dB
Frequency:	800-2500MHz	Impedance:	50 Ω
Coupling:	20±1.50 dB	Temperature:	-35°C - +75°C
Power:	200W Average	Connector:	N-Female
PIM:(dBc)	-150dBc , 2X43dBm	Annotation:	Indoor/Outdoor Use
V.S.W.R:	≤ 1.15	Environment:	IP65 , RoHS



Item Name:	Cavity Type Power Tapper	Mailine Loss:	0.10±0.1dB
Model:	PT-825-200-30CNI	Insertion Loss:	0.10 dB
Frequency:	800-2500MHz	Impedance:	50 Ω
Coupling:	30±1.50 dB	Temperature:	-35°C - +75°C
Power:	200W Average	Connector:	N-Female
PIM:(dBc)	-150dBc , 2X43dBm	Annotation:	Indoor/Outdoor Use
V.S.W.R:	≤ 1.15	Environment:	IP65 , RoHS



Item Name:	Cavity Type Power Tapper	Mailine Loss:	0.10±0.1dB
Model:	PT-825-200-40CNI	Insertion Loss:	0.10 dB
Frequency:	800-2500MHz	Impedance:	50 Ω
Coupling:	40±1.50 dB	Temperature:	-35°C - +75°C
Power:	200W Average	Connector:	N-Female
PIM:(dBc)	-150dBc , 2X43dBm	Annotation:	Indoor/Outdoor Use
V.S.W.R:	≤ 1.15	Environment:	IP65 , RoHS



Item Name:	Cavity Type Power Tapper	Mailine Loss:	0.10±0.1dB
Model:	PT-825-200-50CNI	Insertion Loss:	0.10 dB
Frequency:	800-2500MHz	Impedance:	50 Ω
Coupling:	50±1.50 dB	Temperature:	-35°C - +75°C
Power:	200W Average	Connector:	N-Female
PIM:(dBc)	-150dBc , 2X43dBm	Annotation:	Indoor/Outdoor Use
V.S.W.R:	≤ 1.15	Environment:	IP65 , RoHS

1700-2500MHz Power Tapper



Item Name:	Cavity Type Power Tapper	Mailine Loss:	1.26±0.4dB
Model:	PT-1725-200-6CNI	Insertion Loss:	0.10 dB
Frequency:	1700-2500MHz	Impedance:	50 Ω
Coupling:	6±0.80 dB	Temperature:	-35°C - +75°C
Power:	200W Average	Connector:	N-Female
PIM:(dBc)	-150dBc , 2X43dBm	Annotation:	Indoor/Outdoor Use
V.S.W.R:	≤ 1.15	Environment:	IP65 , RoHS



Item Name:	Cavity Type Power Tapper	Mailine Loss:	0.46±0.3dB
Model:	PT-1725-200-10CNI	Insertion Loss:	0.10 dB
Frequency:	1700-2500MHz	Impedance:	50 Ω
Coupling:	10±1.00 dB	Temperature:	-35°C - +75°C
Power:	200W Average	Connector:	N-Female
PIM:(dBc)	-150dBc , 2X43dBm	Annotation:	Indoor/Outdoor Use
V.S.W.R:	≤ 1.15	Environment:	IP65 , RoHS



Item Name:	Cavity Type Power Tapper	Mailine Loss:	0.20±0.2dB
Model:	PT-1725-200-15CNI	Insertion Loss:	0.10 dB
Frequency:	1700-2500MHz	Impedance:	50 Ω
Coupling:	15±1.20 dB	Temperature:	-35°C - +75°C
Power:	200W Average	Connector:	N-Female
PIM:(dBc)	-150dBc , 2X43dBm	Annotation:	Indoor/Outdoor Use
V.S.W.R:	≤ 1.15	Environment:	IP65 , RoHS



Item Name:	Cavity Type Power Tapper	Mailine Loss:	0.10±0.1dB
Model:	PT-1725-200-20CNI	Insertion Loss:	0.10 dB
Frequency:	1700-2500MHz	Impedance:	50 Ω
Coupling:	20±1.50 dB	Temperature:	-35°C - +75°C
Power:	200W Average	Connector:	N-Female
PIM:(dBc)	-150dBc , 2X43dBm	Annotation:	Indoor/Outdoor Use
V.S.W.R:	≤ 1.15	Environment:	IP65 , RoHS

13.FIXED ATTENUATORS



Item Name:	Fixed Attenuator	V.S.W.R:	≤ 1.20
Model:	ATF-5W-3GSXX (Round)	Attenuation:	5 ~ 30 dB
Frequency:	DC-3000MHz	Accuracy:	$\pm 0.5\text{dB}$
Impedance:	50 Ω	Temperature:	$-35^{\circ}\text{C} - +85^{\circ}\text{C}$
Connector:	SMA Male-SMA Female	Radiator:	Copper
Power:	5 W (Average)	Annotation:	Indoor Use



Item Name:	Fixed Attenuator	V.S.W.R:	≤ 1.20
Model:	ATF-2W-3GNXX (Round)	Attenuation:	5 ~ 30 dB
Frequency:	DC-3000MHz	Accuracy:	$\pm 0.5\text{dB}$
Impedance:	50 Ω	Temperature:	$-35^{\circ}\text{C} - +85^{\circ}\text{C}$
Connector:	N Male-N Female	Radiator:	Copper
Power:	2 W (Average)	Annotation:	Indoor Use



Item Name:	Fixed Attenuator (Round)	V.S.W.R:	≤ 1.20
Model:	ATF-5W-3GNXX	Attenuation:	5 ~ 30 dB
Frequency:	DC-3000MHz	Accuracy:	$\pm 0.5\text{dB}$
Impedance:	50 Ω	Temperature:	$-35^{\circ}\text{C} - +85^{\circ}\text{C}$
Connector:	N Male-N Female	Radiator:	Alumina
Power:	5 W (Average)	Annotation:	Indoor Use



Item Name:	Fixed Attenuator (Round)	V.S.W.R:	≤ 1.20
Model:	ATF-10W-3GNXX	Attenuation:	5 ~ 30 dB
Frequency:	DC-3000MHz	Accuracy:	$\pm 0.5\text{dB}$
Impedance:	50 Ω	Temperature:	$-35^{\circ}\text{C} - +85^{\circ}\text{C}$
Connector:	N Male-N Female	Radiator:	Alumina
Power:	10 W (Average)	Annotation:	Indoor Use



Item Name:	Fixed Attenuator	V.S.W.R:	≤ 1.20
Model:	ATF-10W-3GNXX	Attenuation:	5 ~ 30 dB
Frequency:	DC-3000MHz	Accuracy:	$\pm 0.5\text{dB}$
Impedance:	50 Ω	Temperature:	$-35^{\circ}\text{C} - +85^{\circ}\text{C}$
Connector:	SMA-Male/Female	Radiator:	Alumina
Power:	10 W (Average)	Annotation:	Indoor Use



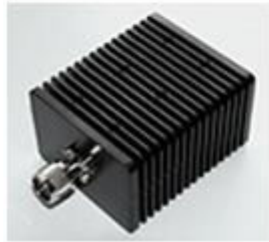
Item Name:	Fixed Attenuator	V.S.W.R:	≤ 1.20
Model:	ATF-20W-3GNXX	Attenuation:	5 ~ 30 dB
Frequency:	DC-3000MHz	Accuracy:	$\pm 0.5\text{dB}$
Impedance:	50 Ω	Temperature:	$-35^{\circ}\text{C} - +85^{\circ}\text{C}$
Connector:	N Male-N Female	Radiator:	Alumina
Power:	20 W (Average)	Annotation:	Indoor Use



Item Name:	Fixed Attenuator	V.S.W.R:	≤ 1.20
Model:	ATF-25W-3GNXX	Attenuation:	5 ~ 30 dB
Frequency:	DC-3000MHz	Accuracy:	$\pm 0.5\text{dB} / \pm 1.0\text{dB}$
Impedance:	50 Ω	Temperature:	-35°C - +85°C
Connector:	N Male-N Female	Radiator:	Alumina
Power:	25 W (Average)	Annotation:	Indoor Use



Item Name:	Fixed Attenuator	V.S.W.R:	≤ 1.20
Model:	ATF-30W-3GNXX	Attenuation:	5 ~ 30 dB
Frequency:	DC-3000MHz	Accuracy:	$\pm 0.5\text{dB} / \pm 1.0\text{dB}$
Impedance:	50 Ω	Temperature:	-35°C - +85°C
Connector:	N Male-N Female	Radiator:	Alumina
Power:	30 W (Average)	Annotation:	Indoor Use



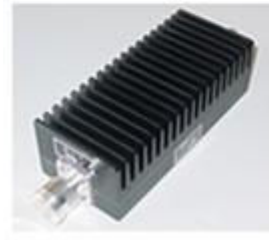
Item Name:	Fixed Attenuator	V.S.W.R:	≤ 1.20
Model:	ATF-50W-2.5GNXX	Attenuation:	5 ~ 40 dB
Frequency:	DC-2500MHz	Accuracy:	$\pm 0.5\text{dB} / \pm 1.0\text{dB}$
Impedance:	50 Ω	Temperature:	-35°C - +85°C
Connector:	N Male-N Female	Radiator:	Alumina
Power:	50 W (Average)	Annotation:	Indoor Use



Item Name:	Fixed Attenuator	V.S.W.R:	≤ 1.20
Model:	ATF-100W-2.5GNXX	Attenuation:	5 ~ 40 dB
Frequency:	DC-2500MHz	Accuracy:	$\pm 0.5\text{dB} / \pm 1.0\text{dB}$
Impedance:	50 Ω	Temperature:	-35°C - +85°C
Connector:	N Male-N Female	Radiator:	Alumina
Power:	100 W (Average)	Annotation:	Indoor Use



Item Name:	Fixed Attenuator	V.S.W.R:	≤ 1.20
Model:	ATF-100W-2.5GDXX	Attenuation:	5 ~ 40 dB
Frequency:	DC-2500MHz	Accuracy:	$\pm 0.5\text{dB} / \pm 1.0\text{dB}$
Impedance:	50 Ω	Temperature:	-35°C - +85°C
Connector:	DIN Female-DIN Female	Radiator:	Alumina
Power:	100 W (Average)	Annotation:	Indoor Use



Item Name:	Fixed Attenuator	V.S.W.R:	≤ 1.20
Model:	ATF-100W-3GDXX	Attenuation:	5 ~ 40 dB
Frequency:	DC-3000MHz	Accuracy:	$\pm 0.5\text{dB} / \pm 1.0\text{dB}$
Impedance:	50 Ω	Temperature:	-35°C - +85°C
Connector:	DIN Male-DIN Female	Radiator:	Alumina
Power:	100 W (Average)	Annotation:	Indoor Use

14.N SERIES SURGE PROTECTOR(SURGE ARRESTOR)



Item Name:	1/4λ Surge Protector	Insertion loss:	≤ 0.15
Model:	BLQ-1/4-825NS	V.S.W.R:	≤ 1.15
Class:	Quarter-Wave	Impedance:	50 Ω
Frequency:	800-2500MHz	Bulkhead:	Non
Peak Power:	1000W (MAX)	Connector:	N-M/F
Discharge Capacity:	20KA	Temperature:	-40°C - +80°C



Item Name:	1/4λ Surge Protector	Insertion loss:	≤ 0.15
Model:	BLQ-1/4-825NBT	V.S.W.R:	≤ 1.10
Class:	Quarter-Wave	Impedance:	50 Ω
Frequency:	800-960MHz	Bulkhead:	Yes
Peak Power:	1000W (MAX)	Connector:	N-M/F
Discharge Capacity:	20KA	Temperature:	-40°C - +80°C



Item Name:	Gas Discharge Protector	Insertion loss:	≤ 0.20
Model:	BLQ-GD-825NBS	V.S.W.R:	≤ 1.15
Class:	Gas Discharge	Impedance:	50 Ω
Frequency:	DC-2500MHz	Bulkhead:	Yes
Peak Power:	200W (MAX)	Connector:	N-M/F
Discharge Capacity:	10KA	Temperature:	-40°C - +85°C



Item Name:	Gas Discharge Protector	Insertion loss:	≤ 0.20
Model:	BLQ-GD-2.5GNBF	V.S.W.R:	≤ 1.15
Class:	Gas Discharge	Impedance:	50 Ω
Frequency:	DC-2500MHz	Bulkhead:	Yes
Peak Power:	200W (MAX)	Connector:	N-F/F
Discharge Capacity:	10KA	Temperature:	-40°C - +85°C



Item Name:	Gas Discharge Protector	Insertion loss:	≤ 0.20
Model:	BLQ-GD-2.5GNBR	V.S.W.R:	≤ 1.15
Class:	Gas Discharge	Impedance:	50 Ω
Frequency:	DC-2500MHz	Bulkhead:	Yes
Peak Power:	200W (MAX)	Connector:	N-M/F
Discharge Capacity:	10KA	Temperature:	-40°C - +85°C



Item Name:	Gas Discharge Protector	Insertion loss:	≤ 0.20
Model:	BLQ-GD-2.5GNBZ	V.S.W.R:	≤ 1.15
Class:	Gas Discharge	Impedance:	50 Ω
Frequency:	DC-2500MHz	Bulkhead:	Yes
Peak Power:	200W (MAX)	Connector:	N-M/F
Discharge Capacity:	10KA	Temperature:	-40°C - +85°C



Item Name:	Gas Discharge Protector	Insertion loss:	≤ 0.20
Model:	BLQ-GD-2.5GNBC	V.S.W.R:	≤ 1.15
Class:	Gas Discharge	Impedance:	50 Ω
Frequency:	DC-2500MHz	Bulkhead:	Yes
Peak Power:	200W (MAX)	Connector:	TNC-M/F
Discharge Capacity:	10KA	Temperature:	-40°C - +85°C

15.7/16(DIN) SERIES SURGE PROTECTOR(SURGE ARRESTOR)



Item Name:	1/4 λ Surge Protector	Insertion loss:	≤ 0.20
Model:	BLQ-1/4-825DS	V.S.W.R:	≤ 1.20
Class:	Quarter-Wave	Impedance:	50 Ω
Frequency:	800-2500MHz	Bulkhead:	Non
Peak Power:	2500W (MAX)	Connector:	7/16(DIN)-M/F
Discharge Capacity:	60KA	Temperature:	-40°C - +80°C



Item Name:	1/4 λ Surge Protector	Insertion loss:	≤ 0.20
Model:	BLQ-1/4-825DB	V.S.W.R:	≤ 1.20
Class:	Quarter-Wave	Impedance:	50 Ω
Frequency:	800-2500MHz	Bulkhead:	Yes
Peak Power:	2500W (MAX)	Connector:	7/16(DIN)-M/F
Discharge Capacity:	60KA	Temperature:	-40°C - +80°C



Item Name:	1/4 λ Surge Protector	Insertion loss:	≤ 0.20
Model:	BLQ-1/4-825DF	V.S.W.R:	≤ 1.20
Class:	Quarter-Wave	Impedance:	50 Ω
Frequency:	800-2500MHz	Bulkhead:	Yes
Peak Power:	2500W (MAX)	Connector:	7/16(DIN)-F/F
Discharge Capacity:	60KA	Temperature:	-40°C - +80°C



Item Name:	1/4λ Surge Protector	Insertion loss:	≤ 0.20
Model:	BLQ-1/4-825DH	V.S.W.R:	≤ 1.20
Class:	Quarter-Wave	Impedance:	50 Ω
Frequency:	800-2500MHz	Bulkhead:	Non
Peak Power:	2500W (MAX)	Connector:	7/16(DIN)-M/F
Discharge Capacity:	60KA	Temperature:	-40°C - +80°C



Item Name:	1/4λ Surge Protector	Insertion loss:	≤ 0.20
Model:	BLQ-1/4-825DT	V.S.W.R:	≤ 1.20
Class:	Quarter-Wave	Impedance:	50 Ω
Frequency:	800-2500MHz	Bulkhead:	Non
Peak Power:	2500W (MAX)	Connector:	7/16(DIN)-M/F
Discharge Capacity:	60KA	Temperature:	-40°C - +80°C



Item Name:	1/4λ Surge Protector	Insertion loss:	≤ 0.20
Model:	BLQ-1/4-825DF	V.S.W.R:	≤ 1.20
Class:	Quarter-Wave	Impedance:	50 Ω
Frequency:	800-2500MHz	Bulkhead:	Yes
Peak Power:	2500W (MAX)	Connector:	7/16(DIN)-F/F
Discharge Capacity:	60KA	Temperature:	-40°C - +80°C



Item Name:	1/4λ Surge Protector	Insertion loss:	≤ 0.20
Model:	BLQ-1/4-825DHC	V.S.W.R:	≤ 1.20
Class:	Quarter-Wave	Impedance:	50 Ω
Frequency:	800-2500MHz	Bulkhead:	Non
Peak Power:	2500W (MAX)	Connector:	7/16(DIN)-M/F
Discharge Capacity:	60KA	Temperature:	-40°C - +80°C



Item Name:	Gas Discharge Protector	Insertion loss:	≤ 0.10
Model:	BLQ-GD-3GDB	V.S.W.R:	≤ 1.20
Class:	Gas Discharge	Impedance:	50 Ω
Frequency:	DC-3000MHz	Bulkhead:	Yes
Peak Power:	500W (MAX)	Connector:	7/16(DIN)-M/F
Discharge Capacity:	20KA	Temperature:	-40°C - +80°C

16.POWER SPLITTERS(HIGH POWER)

800-2500MHz High Power Series



Item Name:	2 Way Cavity Type	V.S.W.R:	≤ 1.20
Model:	PS-825-300-2CNI	Temperature:	$-35^{\circ}\text{C} - +75^{\circ}\text{C}$
Frequency:	800-2500MHz	Connector:	N-Female , 50 Ω
Power:	300W Average	Annotation:	Indoor/Outdoor Use
PIM:	-150dBc , 2X43dBm	Environment:	IP65 , RoHS



Item Name:	3 Way Cavity Type	V.S.W.R:	≤ 1.20
Model:	PS-825-300-3CNI	Temperature:	$-35^{\circ}\text{C} - +75^{\circ}\text{C}$
Frequency:	800-2500MHz	Connector:	N-Female , 50 Ω
Power:	300W Average	Annotation:	Indoor/Outdoor Use
PIM:	-150dBc , 2X43dBm	Environment:	IP65 , RoHS



Item Name:	4 Way Cavity Type	V.S.W.R:	≤ 1.20
Model:	PS-825-300-4CNI	Temperature:	$-35^{\circ}\text{C} - +75^{\circ}\text{C}$
Frequency:	800-2500MHz	Connector:	N-Female , 50 Ω
Power:	300W Average	Annotation:	Indoor/Outdoor Use
PIM:	-150dBc , 2X43dBm	Environment:	IP65 , RoHS



Item Name:	2 Way Cavity Type	V.S.W.R:	≤ 1.25
Model:	PS-825-200-2CNB	Temperature:	$-30^{\circ}\text{C} - +60^{\circ}\text{C}$
Frequency:	800-2500MHz	Connector:	N-Female , 50 Ω
Power:	200W Average	Annotation:	Indoor Use
Division Loss:	≤ 3.0 dB	Waterproof:	Non



Item Name:	3 Way Cavity Type	V.S.W.R:	≤ 1.25
Model:	PS-825-200-3CNB	Temperature:	$-30^{\circ}\text{C} - +60^{\circ}\text{C}$
Frequency:	800-2500MHz	Connector:	N-Female , 50 Ω
Power:	200W Average	Annotation:	Indoor Use
Division Loss:	≤ 4.8 dB	Waterproof:	Non



Item Name:	4 Way Cavity Type	V.S.W.R:	≤ 1.25
Model:	PS-825-200-4CNB	Temperature:	$-30^{\circ}\text{C} - +60^{\circ}\text{C}$
Frequency:	800-2500MHz	Connector:	N-Female , 50 Ω
Power:	200W Average	Annotation:	Indoor Use
Division Loss:	≤ 6.0 dB	Waterproof:	Non



Item Name:	2 Way Cavity Type	V.S.W.R:	≤ 1.25
Model:	PS-825-100-2CNT	Temperature:	$-30^{\circ}\text{C} - +60^{\circ}\text{C}$
Frequency:	800-2500MHz	Connector:	N-Female , 50 Ω
Power:	100W Average	Annotation:	Indoor Use
Division Loss:	≤ 3.0 dB	Waterproof:	Non



Item Name:	3 Way Cavity Type	V.S.W.R:	≤ 1.25
Model:	PS-825-100-3CNT	Temperature:	$-30^{\circ}\text{C} - +60^{\circ}\text{C}$
Frequency:	800-2500MHz	Connector:	N-Female , 50 Ω
Power:	100W Average	Annotation:	Indoor Use
Division Loss:	≤ 4.8 dB	Waterproof:	Non



Item Name:	4 Way Cavity Type	V.S.W.R:	≤ 1.25
Model:	PS-825-100-4CNT	Temperature:	$-30^{\circ}\text{C} - +60^{\circ}\text{C}$
Frequency:	800-2500MHz	Connector:	N-Female , 50 Ω
Power:	100W Average	Annotation:	Indoor Use
Division Loss:	≤ 6.0 dB	Waterproof:	Non



Item Name:	2 Way Cavity Type	V.S.W.R:	≤ 1.20
Model:	PS-825-700-2CDI	Temperature:	$-35^{\circ}\text{C} - +75^{\circ}\text{C}$
Frequency:	800-2500MHz	Connector:	7/16(DIN)-Female
Power:	700W Average	Impedance:	50 Ω
Split Loss:	3 dB	Annotation:	Indoor/Outdoor Use
PIM:	-150dBc , 2X43dBm	Environment:	IP65 , RoHS



Item Name:	3 Way Cavity Type	V.S.W.R:	≤ 1.20
Model:	PS-825-700-3CDI	Temperature:	$-35^{\circ}\text{C} - +75^{\circ}\text{C}$
Frequency:	800-2500MHz	Connector:	7/16(DIN)-Female
Power:	700W Average	Impedance:	50 Ω
Split Loss:	4.8 dB	Annotation:	Indoor/Outdoor Use
PIM:	-150dBc , 2X43dBm	Environment:	IP65 , RoHS



Item Name:	4 Way Cavity Type	V.S.W.R:	≤ 1.20
Model:	PS-825-700-4CDI	Temperature:	$-35^{\circ}\text{C} - +75^{\circ}\text{C}$
Frequency:	800-2500MHz	Connector:	7/16(DIN)-Female
Power:	700W Average	Impedance:	50 Ω
Split Loss:	6 dB	Annotation:	Indoor/Outdoor Use
PIM:	-150dBc , 2X43dBm	Environment:	IP65 , RoHS

380-2700MHz High Power Series



Item Name:	2 Way Cavity Type	V.S.W.R:	≤ 1.25
Model:	PS-327-300-2CNI	Temperature:	$-35^{\circ}\text{C} - +75^{\circ}\text{C}$
Frequency:	380-2700MHz	Connector:	N-Female , 50 Ω
Power:	300W Average	Annotation:	Indoor/Outdoor Use
PIM:	-150dBc , 2X43dBm	Environment:	IP65 , RoHS



Item Name:	3 Way Cavity Type	V.S.W.R:	≤ 1.25
Model:	PS-327-300-3CNI	Temperature:	$-35^{\circ}\text{C} - +75^{\circ}\text{C}$
Frequency:	380-2700MHz	Connector:	N-Female , 50 Ω
Power:	300W Average	Annotation:	Indoor/Outdoor Use
PIM:	-150dBc , 2X43dBm	Environment:	IP65 , RoHS



Item Name:	4 Way Cavity Type	V.S.W.R:	≤ 1.25
Model:	PS-327-300-4CNI	Temperature:	$-35^{\circ}\text{C} - +75^{\circ}\text{C}$
Frequency:	380-2700MHz	Connector:	N-Female , 50 Ω
Power:	300W Average	Annotation:	Indoor/Outdoor Use
PIM:	-150dBc , 2X43dBm	Environment:	IP65 , RoHS

700-2700MHz High Power Series



Item Name:	2 Way Cavity Type	V.S.W.R:	≤ 1.20
Model:	PS-727-300-2CNI	Temperature:	$-35^{\circ}\text{C} - +85^{\circ}\text{C}$
Frequency:	700-2700MHz	Connector:	N-Female , 50 Ω
Power:	300W Average	Annotation:	Indoor/Outdoor Use
PIM:	-150dBc , 2X43dBm	Environment:	IP65 , RoHS



Item Name:	3 Way Cavity Type	V.S.W.R:	≤ 1.25
Model:	PS-727-300-3CNI	Temperature:	$-35^{\circ}\text{C} - +85^{\circ}\text{C}$
Frequency:	700-2700MHz	Connector:	N-Female , 50 Ω
Power:	300W Average	Annotation:	Indoor/Outdoor Use
PIM:	-150dBc , 2X43dBm	Environment:	IP65 , RoHS



Item Name:	4 Way Cavity Type	V.S.W.R:	≤ 1.30
Model:	PS-727-300-4CNI	Temperature:	$-35^{\circ}\text{C} - +85^{\circ}\text{C}$
Frequency:	700-2700MHz	Connector:	N-Female , 50 Ω
Power:	300W Average	Annotation:	Indoor/Outdoor Use
PIM:	-150dBc , 2X43dBm	Environment:	IP65 , RoHS



Item Name:	2 Way Cavity Type	V.S.W.R:	≤ 1.20
Model:	PS-727-700-2CDI	Temperature:	$-35^{\circ}\text{C} - +85^{\circ}\text{C}$
Frequency:	700-2700MHz	Connector:	7/16(DIN)-Female
Power:	700W Average	Impedance:	50 Ω
Split Loss:	3 dB	Annotation:	Indoor/Outdoor Use
PIM:	-150dBc , 2X43dBm	Environment:	IP65 , RoHS



Item Name:	3 Way Cavity Type	V.S.W.R:	≤ 1.25
Model:	PS-727-700-3CDI	Temperature:	$-35^{\circ}\text{C} - +85^{\circ}\text{C}$
Frequency:	700-2700MHz	Connector:	7/16(DIN)-Female
Power:	700W Average	Impedance:	50 Ω
Split Loss:	4.8 dB	Annotation:	Indoor/Outdoor Use
PIM:	-150dBc , 2X43dBm	Environment:	IP65 , RoHS



Item Name:	4 Way Cavity Type	V.S.W.R:	≤ 1.30
Model:	PS-727-700-4CDI	Temperature:	$-35^{\circ}\text{C} - +85^{\circ}\text{C}$
Frequency:	700-2700MHz	Connector:	7/16(DIN)-Female
Power:	700W Average	Impedance:	50 Ω
Split Loss:	6 dB	Annotation:	Indoor/Outdoor Use
PIM:	-150dBc , 2X43dBm	Environment:	IP65 , RoHS

1700-2500MHz High Power Series



Item Name:	2 Way Cavity Type	V.S.W.R:	≤ 1.20
Model:	PS-1725-300-2CNI	Temperature:	$-35^{\circ}\text{C} - +75^{\circ}\text{C}$
Frequency:	1700-3500MHz	Connector:	N-Female , 50 Ω
Power:	300W Average	Annotation:	Indoor/Outdoor Use
PIM:	-150dBc , 2X43dBm	Environment:	IP65 , RoHS



Item Name:	3 Way Cavity Type	V.S.W.R:	≤ 1.20
Model:	PS-1725-300-3CNI	Temperature:	$-35^{\circ}\text{C} - +75^{\circ}\text{C}$
Frequency:	1700-3500MHz	Connector:	N-Female , 50 Ω
Power:	300W Average	Annotation:	Indoor/Outdoor Use
PIM:	-150dBc , 2X43dBm	Environment:	IP65 , RoHS



Item Name:	4 Way Cavity Type	V.S.W.R:	≤ 1.20
Model:	PS-1725-300-4CNI	Temperature:	$-35^{\circ}\text{C} - +75^{\circ}\text{C}$
Frequency:	1700-3500MHz	Connector:	N-Female , 50 Ω
Power:	300W Average	Annotation:	Indoor/Outdoor Use
PIM:	-150dBc , 2X43dBm	Environment:	IP65 , RoHS

800-3500MHz High Power Series



Item Name:	2 Way Cavity Type	V.S.W.R:	≤ 1.35
Model:	PS-835-300-2CNI	Temperature:	$-35^{\circ}\text{C} - +75^{\circ}\text{C}$
Frequency:	800-3500MHz	Connector:	N-Female , 50 Ω
Power:	300W Average	Annotation:	Indoor/Outdoor Use
PIM:	-150dBc , 2X43dBm	Environment:	IP65 , RoHS



Item Name:	3 Way Cavity Type	V.S.W.R:	≤ 1.35
Model:	PS-835-300-3CNI	Temperature:	$-35^{\circ}\text{C} - +75^{\circ}\text{C}$
Frequency:	800-3500MHz	Connector:	N-Female , 50 Ω
Power:	300W Average	Annotation:	Indoor/Outdoor Use
PIM:	-150dBc , 2X43dBm	Environment:	IP65 , RoHS



Item Name:	4 Way Cavity Type	V.S.W.R:	≤ 1.35
Model:	PS-835-300-4CNI	Temperature:	$-35^{\circ}\text{C} - +75^{\circ}\text{C}$
Frequency:	800-3500MHz	Connector:	N-Female , 50 Ω
Power:	300W Average	Annotation:	Indoor/Outdoor Use
PIM:	-150dBc , 2X43dBm	Environment:	IP65 , RoHS



Item Name:	2 Way Cavity Type	V.S.W.R:	≤ 1.35
Model:	PS-835-700-2CDI	Temperature:	$-35^{\circ}\text{C} - +75^{\circ}\text{C}$
Frequency:	800-3500MHz	Connector:	7/16(DIN)-Female
Power:	700W Average	Impedance:	50 Ω
Split Loss:	3 dB	Annotation:	Indoor/Outdoor Use
PIM:	-150dBc , 2X43dBm	Environment:	IP65 , RoHS



Item Name:	3 Way Cavity Type	V.S.W.R:	≤ 1.35
Model:	PS-835-700-3CDI	Temperature:	$-35^{\circ}\text{C} - +75^{\circ}\text{C}$
Frequency:	800-3500MHz	Connector:	7/16(DIN)-Female
Power:	700W Average	Impedance:	50 Ω
Split Loss:	4.8 dB	Annotation:	Indoor/Outdoor Use
PIM:	-150dBc , 2X43dBm	Environment:	IP65 , RoHS



Item Name:	4 Way Cavity Type	V.S.W.R:	≤ 1.35
Model:	PS-835-700-4CDI	Temperature:	$-35^{\circ}\text{C} - +75^{\circ}\text{C}$
Frequency:	800-3500MHz	Connector:	7/16(DIN)-Female
Power:	700W Average	Impedance:	50 Ω
Split Loss:	6 dB	Annotation:	Indoor/Outdoor Use
PIM:	-150dBc , 2X43dBm	Environment:	IP65 , RoHS

700-3800MHz High Power Series



Item Name:	2 Way Cavity Type	V.S.W.R:	≤ 1.20
Model:	PS-738-300-2CNI	Temperature:	$-35^{\circ}\text{C} - +75^{\circ}\text{C}$
Frequency:	700-3800MHz	Connector:	N-Female , 50 Ω
Power:	300W Average	Annotation:	Indoor/Outdoor Use
PIM:	-150dBc , 2X43dBm	Environment:	IP65 , RoHS



Item Name:	3 Way Cavity Type	V.S.W.R:	≤ 1.20
Model:	PS-738-300-3CNI	Temperature:	$-35^{\circ}\text{C} - +75^{\circ}\text{C}$
Frequency:	700-3800MHz	Connector:	N-Female , 50 Ω
Power:	300W Average	Annotation:	Indoor/Outdoor Use
PIM:	-150dBc , 2X43dBm	Environment:	IP65 , RoHS



Item Name:	4 Way Cavity Type	V.S.W.R:	≤ 1.30
Model:	PS-738-300-4CNI	Temperature:	$-35^{\circ}\text{C} - +75^{\circ}\text{C}$
Frequency:	700-3800MHz	Connector:	N-Female , 50 Ω
Power:	300W Average	Annotation:	Indoor/Outdoor Use
PIM:	-150dBc , 2X43dBm	Environment:	IP65 , RoHS



Item Name:	2 Way Cavity Type	V.S.W.R:	≤ 1.20
Model:	PS-738-700-2CDI	Temperature:	$-35^{\circ}\text{C} - +75^{\circ}\text{C}$
Frequency:	700-3800MHz	Connector:	7/16(DIN)-Female
Power:	700W Average	Impedance:	50 Ω
Split Loss:	3 dB	Annotation:	Indoor/Outdoor Use
PIM:	-150dBc , 2X43dBm	Environment:	IP65 , RoHS



Item Name:	3 Way Cavity Type	V.S.W.R:	≤ 1.20
Model:	PS-738-700-3CDI	Temperature:	$-35^{\circ}\text{C} - +75^{\circ}\text{C}$
Frequency:	700-3800MHz	Connector:	7/16(DIN)-Female
Power:	700W Average	Impedance:	50 Ω
Split Loss:	4.8 dB	Annotation:	Indoor/Outdoor Use
PIM:	-150dBc , 2X43dBm	Environment:	IP65 , RoHS



Item Name:	4 Way Cavity Type	V.S.W.R:	≤ 1.30
Model:	PS-738-700-4CDI	Temperature:	$-35^{\circ}\text{C} - +75^{\circ}\text{C}$
Frequency:	700-3800MHz	Connector:	7/16(DIN)-Female
Power:	700W Average	Impedance:	50 Ω
Split Loss:	6 dB	Annotation:	Indoor/Outdoor Use
PIM:	-150dBc , 2X43dBm	Environment:	IP65 , RoHS

300-960MHz High Power Series



Item Name:	2 Way Cavity Type	V.S.W.R:	≤ 1.35
Model:	PS-30.96-300-2CNI	Temperature:	$-35^{\circ}\text{C} - +75^{\circ}\text{C}$
Frequency:	300-960MHz	Connector:	N-Female , 50 Ω
Power:	300W Average	Annotation:	Indoor/Outdoor Use
PIM:	-150dBc , 2X43dBm	Environment:	IP65 , RoHS



Item Name:	4 Way Cavity Type	V.S.W.R:	≤ 1.30
Model:	PS-30.96-300-4CNR	Temperature:	$-35^{\circ}\text{C} - +75^{\circ}\text{C}$
Frequency:	300-960MHz	Connector:	N-Female , 50 Ω
Power:	300W Average	Annotation:	Indoor/Outdoor Use
PIM:	-150dBc , 2X43dBm	Environment:	IP65 , RoHS



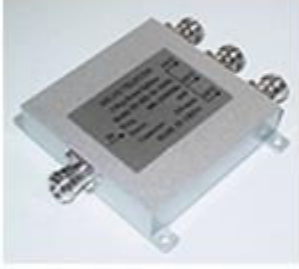
Item Name:	2 Way Cavity Type	V.S.W.R:	≤ 1.35
Model:	PS-30.96-700-2CDI	Temperature:	$-35^{\circ}\text{C} - +75^{\circ}\text{C}$
Frequency:	300-960MHz	Connector:	7/16(DIN)-Female
Power:	700W Average	Impedance:	50 Ω
Split Loss:	3 dB	Annotation:	Indoor/Outdoor Use
PIM:	-150dBc , 2X43dBm	Environment:	IP65 , RoHS

20. POWER SPLITTERS(LOW POWER)

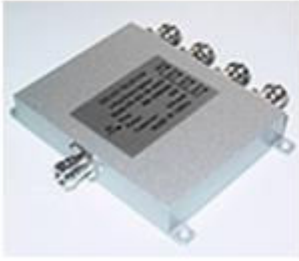
800-2500MHz Low Power Series



Item Name:	2 Way Micro-Strip Type	V.S.W.R:	≤ 1.25
Model:	PS-825-50-2MNI	Temperature:	$-25^{\circ}\text{C} - +75^{\circ}\text{C}$
Frequency:	800-2500MHz	Connector:	N-Female , 50 Ω
Power:	50W Average	Annotation:	Indoor/Outdoor Use
PIM:	-130dBc , 2X43dBm	Environment:	IP65 , RoHS



Item Name:	3 Way Micro-Strip Type	V.S.W.R:	≤ 1.25
Model:	PS-825-50-3MNI	Temperature:	$-25^{\circ}\text{C} - +75^{\circ}\text{C}$
Frequency:	800-2500MHz	Connector:	N-Female , 50 Ω
Power:	50W Average	Annotation:	Indoor/Outdoor Use
PIM:	-130dBc , 2X43dBm	Environment:	IP65 , RoHS



Item Name:	4 Way Micro-Strip Type	V.S.W.R:	≤ 1.25
Model:	PS-825-50-4MNI	Temperature:	$-25^{\circ}\text{C} - +75^{\circ}\text{C}$
Frequency:	800-2500MHz	Connector:	N-Female , 50 Ω
Power:	50W Average	Annotation:	Indoor/Outdoor Use
PIM:	-130dBc , 2X43dBm	Environment:	IP65 , RoHS



Item Name:	2 Way Micro-Strip Type	V.S.W.R:	≤ 1.25
Model:	PS-825-50-2MNK	Temperature:	$-10^{\circ}\text{C} - +55^{\circ}\text{C}$
Frequency:	800-2500MHz	Connector:	N-Female , 50 Ω
Power:	50W Average	Annotation:	Indoor Use
Division Loss:	≤ 3.0 dB	Waterproof:	Non



Item Name:	3 Way Micro-Strip Type	V.S.W.R:	≤ 1.25
Model:	PS-825-50-3MNK	Temperature:	$-10^{\circ}\text{C} - +55^{\circ}\text{C}$
Frequency:	800-2500MHz	Connector:	N-Female , 50 Ω
Power:	50W Average	Annotation:	Indoor Use
Insertion Loss:	≤ 4.8 dB	Waterproof:	Non



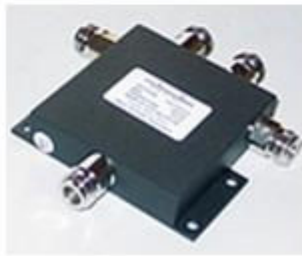
Item Name:	4 Way Micro-Strip Type	V.S.W.R:	≤ 1.25
Model:	PS-825-50-4MNK	Temperature:	$-10^{\circ}\text{C} - +55^{\circ}\text{C}$
Frequency:	800-2500MHz	Connector:	N-Female , 50 Ω
Power:	50W Average	Annotation:	Indoor Use
Division Loss:	≤ 6.0 dB	Waterproof:	Non



Item Name:	2 Way Micro-Strip Type	V.S.W.R:	≤ 1.25
Model:	PS-825-20-2MNK	Temperature:	$-10^{\circ}\text{C} - +55^{\circ}\text{C}$
Frequency:	800-2500MHz	Connector:	N-Female , 50 Ω
Power:	20W Average	Annotation:	Indoor Use
Division Loss:	≤ 3.0 dB	Waterproof:	Non



Item Name:	3 Way Micro-Strip Type	V.S.W.R:	≤ 1.25
Model:	PS-825-20-3MNK	Temperature:	$-10^{\circ}\text{C} - +55^{\circ}\text{C}$
Frequency:	800-2500MHz	Connector:	N-Female , 50 Ω
Power:	20W Average	Annotation:	Indoor Use
Insertion Loss:	≤ 4.8 dB	Waterproof:	Non



Item Name:	4 Way Micro-Strip Type	V.S.W.R:	≤ 1.25
Model:	PS-825-20-4MNK	Temperature:	$-10^{\circ}\text{C} - +55^{\circ}\text{C}$
Frequency:	800-2500MHz	Connector:	N-Female , 50 Ω
Power:	20W Average	Annotation:	Indoor Use
Division Loss:	≤ 6.0 dB	Waterproof:	Non



Item Name:	2 Way Micro-Strip Type	V.S.W.R:	≤ 1.25
Model:	PS-825-50-2MNB	Temperature:	$-30^{\circ}\text{C} - +70^{\circ}\text{C}$
Frequency:	800-2500MHz	Connector:	N-Female , 50 Ω
Power:	50W Average	Annotation:	Indoor Use
Division Loss:	≤ 3.0 dB	Waterproof:	Non



Item Name:	3 Way Micro-Strip Type	V.S.W.R:	≤ 1.25
Model:	PS-825-50-3MNB	Temperature:	$-30^{\circ}\text{C} - +70^{\circ}\text{C}$
Frequency:	800-2500MHz	Connector:	N-Female , 50 Ω
Power:	50W Average	Annotation:	Indoor Use
Division Loss:	≤ 4.8 dB	Waterproof:	Non



Item Name:	4 Way Micro-Strip Type	V.S.W.R:	≤ 1.25
Model:	PS-825-50-4MNB	Temperature:	$-30^{\circ}\text{C} - +70^{\circ}\text{C}$
Frequency:	800-2500MHz	Connector:	N-Female , 50 Ω
Power:	50W(100W) Average	Annotation:	Indoor Use
Division Loss:	≤ 6.0 dB	Waterproof:	Non



Item Name:	2 Way Micro-Strip Type	V.S.W.R:	≤ 1.25
Model:	PS-825-50-2MSR	Temperature:	-25°C - +75°C
Frequency:	800-2500MHz	Connector:	SMA-Female , 50 Ω
Power:	50W Average	Annotation:	Indoor Use
PIM:	-130dBc , 2X43dBm	Environment:	RoHS Compliant



Item Name:	3 Way Micro-Strip Type	V.S.W.R:	≤ 1.25
Model:	PS-825-50-3MSR	Temperature:	-25°C - +75°C
Frequency:	800-2500MHz	Connector:	SMA-Female , 50 Ω
Power:	50W Average	Annotation:	Indoor Use
PIM:	-130dBc , 2X43dBm	Environment:	RoHS Compliant



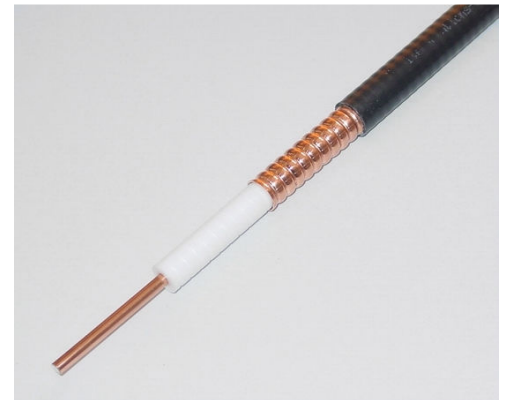
Item Name:	4 Way Micro-Strip Type	V.S.W.R:	≤ 1.25
Model:	PS-825-50-4MSR	Temperature:	-25°C - +75°C
Frequency:	800-2500MHz	Connector:	SMA-Female , 50 Ω
Power:	50W Average	Annotation:	Indoor Use
PIM:	-130dBc , 2X43dBm	Environment:	RoHS Compliant

18.RF FEEDER CABLES

1/2"	7/8"	7/8"LS	7/8"AL	1-1/4"
1-5/8"	1/4"SF	3/8"SF	1/2"SF	7/8"SF
Air Cable				

1/2" FOAM DIELECTRIC FEEDER COAXIAL CABLE

Item	Diameter	Material
Inner Conductor	4.8 mm	Copper clad aluminum wire
Insulator	12.3 mm	Foamed polyethylene
Outer Conductor	13.9 mm	Annular corrugated copper tube
Jacket	16.0 mm	Polyethylene



Frequency MHz	Attenuation	Average Power	Frequency MHz	Attenuation dB	Average Power
10	0.65	13.0	1800	9.96	0.857
100	2.12	3.94	1900	10.27	0.828
150	2.61	3.20	2000	10.57	0.809
200	3.04	2.75	2100	10.87	0.784
300	3.76	2.23	2200	11.16	0.767
450	4.66	1.80	2400	11.72	0.730
500	4.93	1.71	2500	12.00	0.713
700	5.91	1.45	2700	12.55	0.684
800	6.35	1.33	3000	13.33	0.645
900	6.78	1.25	4000	15.75	0.543
1000	7.18	1.18	5000	18.00	0.476
1500	8.99	0.947	6000	20.06	0.426
1700	9.64	0.884	8000	23.91	0.358

1/2" SUPER FLEXIBLE FEEDER COAXIAL CABLE

Item	Diameter	Material
Inner Conductor	3.6 mm	Copper clad aluminum wire
Insulator	9.0 mm	Foamed polyethylene
Outer Conductor	12.1 mm	Helical corrugated copper tube
Jacket	14.0 mm	Polyethylene



Attenuation & Average Power Rating (dB/100m,KW):

Frequency MHz	Attenuation	Average Power	Frequency MHz	Attenuation	Average Power
10	0.83	8.4	1800	15.54	0.557
100	3.10	2.6	1900	16.04	0.537
150	3.87	2.1	2000	16.52	0.525
200	4.53	1.81	2100	17.00	0.507
300	5.67	1.46	2200	17.47	0.498
450	7.09	1.18	2400	18.78	0.460
500	7.52	1.12	2500	18.84	0.459
700	9.02	0.96	2700	19.72	0.440
800	9.78	0.869	3000	21.00	0.417
900	10.45	0.815	4000	25.94	0.333
1000	11.09	0.770	5000	30.00	0.288

1500	13.98	0.616	6000	33.85	0.255
1700	15.03	0.575	8000	41.10	0.210

7/8" FOAM DIELECTRIC FEEDER COAXIAL CABLE

Item	Diameter	Material
Inner Conductor	9.0 mm	Copper tube
Insulator	22.0 mm	Foamed polyethylene
Outer Conductor	25.0 mm	Annular corrugated copper tube
Jacket	28.0 mm	Polyethylene

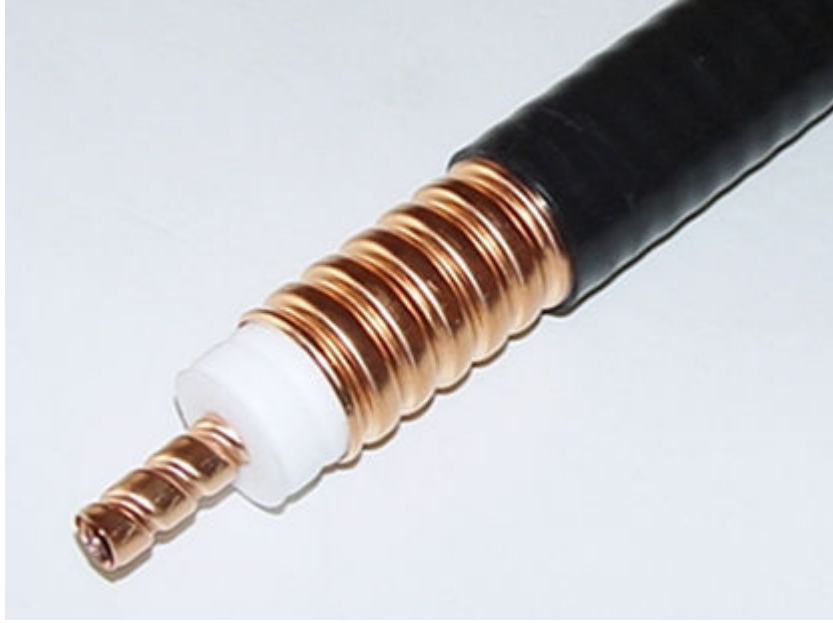


Attenuation & Average Power Rating (dB/100m, KW):

Frequency MHz	Attenuation	Average Power	Frequency MHz	Attenuation	Average Power
10	0.34	28.0	1800	5.63	1.79
100	1.17	8.6	1900	5.81	1.71
150	1.45	7.0	2000	5.98	1.68
200	1.69	6.0	2100	6.15	1.63
300	2.10	4.83	2200	6.32	1.59
450	2.61	3.88	2400	6.68	1.50
500	2.76	3.67	2500	6.80	1.47
700	3.31	3.02	2700	7.11	1.41
800	3.57	2.83	3000	7.57	1.33
900	3.81	2.65	3400	8.22	1.22
1000	4.04	2.50	4000	9.07	1.10
1500	5.08	1.99	5000	10.40	0.96
1700	5.45	1.85			

7/8" SUPER FLEXIBLE FEEDER COAXIAL CABLE

Item	Diameter	Material
Inner Conductor	9.4 mm	Helical corrugated copper tube
Insulator	21.5 mm	Foamed polyethylene
Outer Conductor	25.0 mm	Annular corrugated copper tube
Jacket	27.5 mm	Polyethylene



Attenuation & Average Power Rating (dB/100m,KW)

Frequency MHz	Attenuation	Average Power	Frequency MHz	Attenuation	Average Power
10	0.39	21.5	1800	6.12	1.40
100	1.29	6.60	1900	6.31	1.35
150	1.59	5.40	2000	6.49	1.31
200	1.85	4.60	2100	6.68	1.28
300	2.29	3.70	2200	6.86	1.25
450	2.85	3.00	2400	7.22	1.20
500	3.02	2.82	2500	7.38	1.17
700	3.62	2.39	2700	7.72	1.10
800	3.89	2.20	3000	8.20	1.04
900	4.15	2.07	3400	8.84	0.98
1000	4.40	1.95	4000	9.74	0.89
1500	5.52	1.55	5000	11.13	0.78
1700	5.92	1.45			

AIR DIELECTRIC RF COAXIAL CABLE



JUMPER (FOAM DIELECTRIC FEEDER COAXIAL CABLE)

No.	Description	No.	Description
-----	-------------	-----	-------------

A	N/Male - N/Male	H	7/16(DIN)/Male - 7/16(DIN)/Female
B	N/Male - N/Female	I	7/16(DIN)/Female - 7/16(DIN)/Female
C	N/Female - N/Female	J	N/Male(RA) - N/Male(RA)
D	N/Male - 7/16(DIN)/Male	K	N/Male(RA) - N/Female
E	N/Male - 7/16(DIN)/Female	L	N/Male - 7/16(DIN)/Male(RA)
F	N/Female - 7/16(DIN)/Male	M	7/16(DIN)/Male(RA)-7/16(DIN)/Male(RA)
G	7/16(DIN)/Male-7/16(DIN)/Male	N	7/16(DIN)/Male(RA)-7/16(DIN)/Female



Length: 0.5m,1m,1.5m,1.5m,2m,2.5m,3m,4m,5m,7m,10m,15m,20m.
Cables: 1/4",1/4"SF,3/8",3/8"SF,1/2",1/2"SF,7/8",7/8"SF Feeder Cable

FEEDER CABLE TOOLS

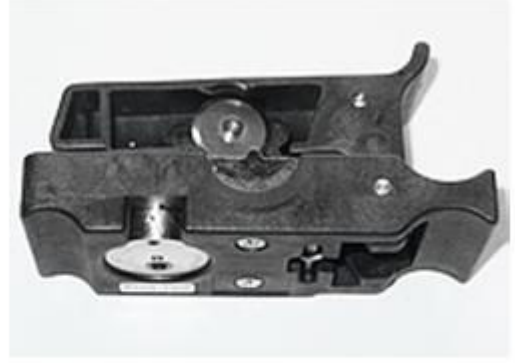
Item Name:	1/2" Feeder Cutter Tool
Product Class:	GELVO Type
Product Model:	TOL-1/2-GTDZ
Body Material:	Alloy Foundry
Match Cable:	1/2" Feeder Cable
Annotation:	1 PCS Blades Spare
Packing Detailed:	Plastic Bag Packing



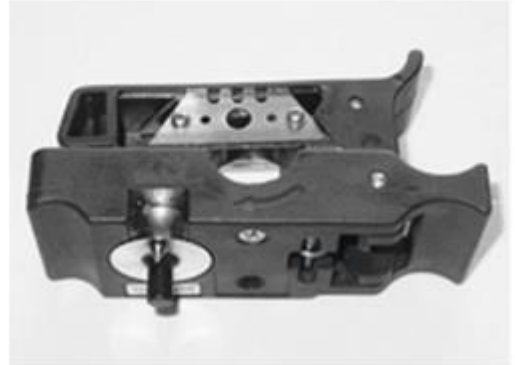
Item Name:	7/8" Feeder Cutter Tool
Product Class:	GELVO Type
Product Model:	TOL-7/8-GTDZ
Body Material:	Alloy Foundry
Match Cable:	7/8" Feeder Cable
Annotation:	1 PCS Blades Spare
Packing Detailed:	Plastic Bag Packing



Item Name: 1/2" Superflexible Feeder Cutter Tool
Product Class: GELVO Type
Product Model: TOL-1/2SF-HXC (HXDX-T302)
Body Material: PP Injection Molding
Match Cable: 1/2" Superflexible Feeder Cable
Annotation: 1 PCS Blades Spare
Packing Detailed: White Box Packing



Item Name: 7/8" Feeder Cutter Tool
Product Class: GELVO Type
Product Model: TOL-7/8-HXC (HXDX-T301)
Body Material: PP Injection Molding
Match Cable: 7/8" Feeder Cable
Annotation: 3 PCS Blades Spare
Packing Detailed: White Box Packing



Item Name: 1/4",1/2" Superflexible Cutter Tool
Product Class: Andrew Type *
Product Model: MCPT-1412
Body Material: PP Injection Molding
Match Cable: 1/4",1/2" Superflexible Feeder Cable
Annotation: 1 PCS Blades Spare
Packing Detailed: Color Box Packing



Item Name: 1/2" Feeder Cutter Tool
Product Class: Andrew Type *
Product Model: MCPT-L4
Body Material: ABS Injection Molding
Match Cable: 1/2" Feeder Cable
Annotation: 5 PCS Blades Spare
Packing Detailed: Color Box Packing



Item Name: 7/8" Feeder Cutter Tool
Product Class: Andrew Type *
Product Model: MCPT-78
Body Material: ABS Injection Molding
Match Cable: 7/8" Feeder Cable
Annotation: 5 PCS Blades Spare
Packing Detailed: Color Box Packing



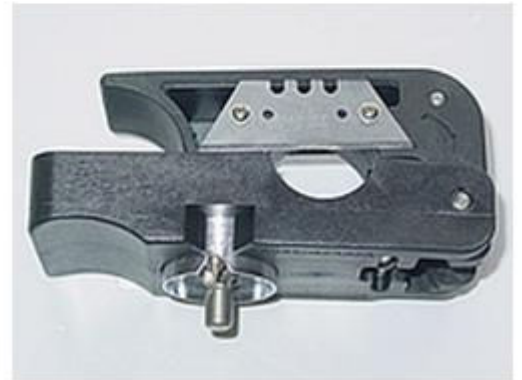
Item Name: 1/2" Feeder Cutter Tool
Product Class: Rosenberger Type **
Product Model: 60W110-C03
Body Material: ABS Injection Molding
Match Cable: 1/2" Feeder Cable
Annotation: Non Blades Spare
Packing Detailed: Color Box Packing



Item Name: 1/2" Superflexible Feeder Cutter Tool
Product Class: Rosenberger Type **
Product Model: 60W110-C08
Body Material: ABS Injection Molding
Match Cable: 1/2" Superflexible Feeder Cable
Annotation: Non Blades Spare
Packing Detailed: Color Box Packing

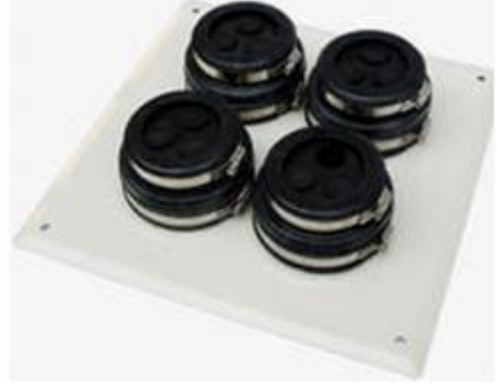


Item Name: 7/8" Feeder Cutter Tool
Product Class: Rosenberger Type **
Product Model: 60W007-C05
Body Material: ABS Injection Molding
Match Cable: 7/8" Feeder Cable
Annotation: 1 PCS Blades Spare
Packing Detailed: Color Box Packing



CABLE ENTRY

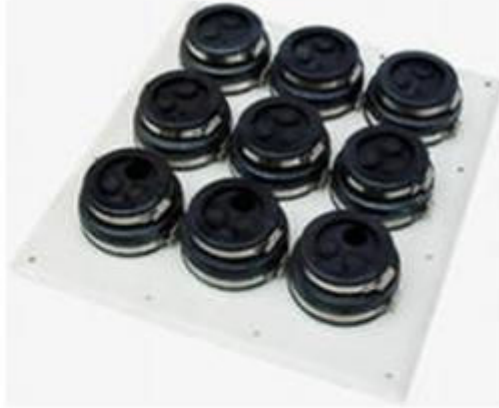
Item Name:	4 Hole Feeder Cable Entry
Product Class:	Hoop Type
Product Model:	EHP-4H-AL(SS)
Metal Plate Material:	Aluminum or Stainless Steel
Hoop Material:	Stainless Steel
Boot Material:	Black Rubber
Boot Match Cable:	1/2",7/8",1-1/4",1-5/8" Feeder
Installation Size:	250MM×250MM



Item Name:	6 Hole Feeder Cable Entry
Product Class:	Hoop Type
Product Model:	EHP-6H-AL(SS)
Metal Plate Material:	Aluminum or Stainless Steel
Hoop Material:	Stainless Steel
Boot Material:	Black Rubber
Boot Match Cable:	1/2",7/8",1-1/4",1-5/8" Feeder
Installation Size:	350MM×400MM



Item Name:	9 Hole Feeder Cable Entry
Product Class:	Hoop Type
Product Model:	EHP-9H-AL(SS)
Metal Plate Material:	Aluminum or Stainless Steel
Hoop Material:	Stainless Steel
Boot Material:	Black Rubber
Boot Match Cable:	1/2",7/8",1-1/4",1-5/8" Feeder
Installation Size:	250MM×250MM



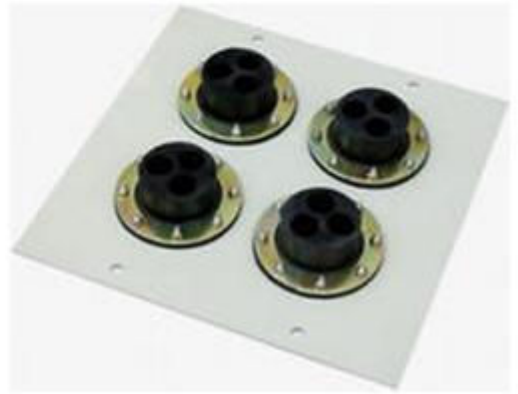
Item Name:	12 Hole Feeder Cable Entry
Product Class:	Hoop Type
Product Model:	EHP-12H-AL(SS)
Metal Plate Material:	Aluminum or Stainless Steel
Hoop Material:	Stainless Steel
Boot Material:	Black Rubber
Boot Match Cable:	1/2",7/8",1-1/4",1-5/8" Feeder
Installation Size:	250MM×250MM



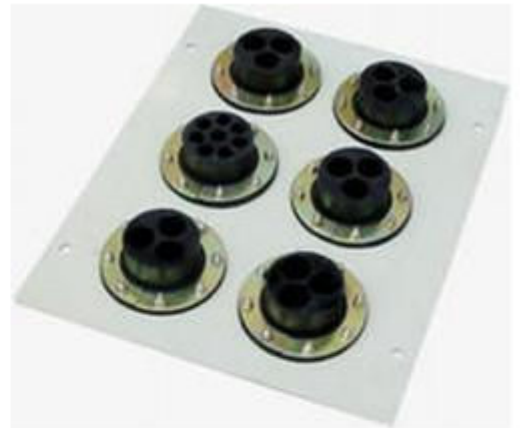
Item Name:	10 Hole Feeder Cable Entry
Product Class:	Hoop Type
Product Model:	EHP-10HS-AL(SS)
Metal Plate Material:	Aluminum or Stainless Steel
Hoop Material:	Stainless Steel
Boot Material:	Black Rubber
Boot Match Cable:	1/2",7/8",1-1/4",1-5/8" Feeder
Installation Size:	380MM×400MM
Annotation:	1/2"X4 + 7/8"X18



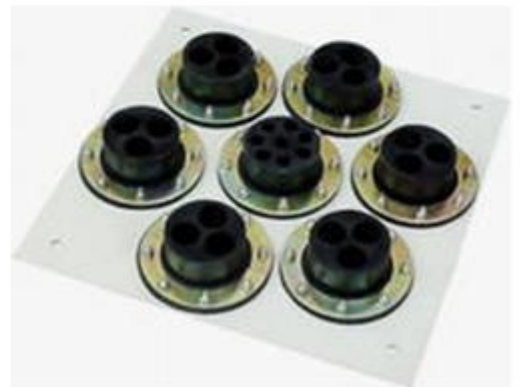
Item Name:	12 Hole Feeder Cable Entry
Product Class:	Through wall Type
Product Model:	ETW-4H-AL(SS)
Metal Plate Material:	Aluminum or Stainless Steel
Hoop Material:	Iron Zincification
Boot Material:	Black Rubber
Boot Match Cable:	1/2",7/8",1-1/4",1-5/8" Feeder
Installation Size:	250MM×250MM



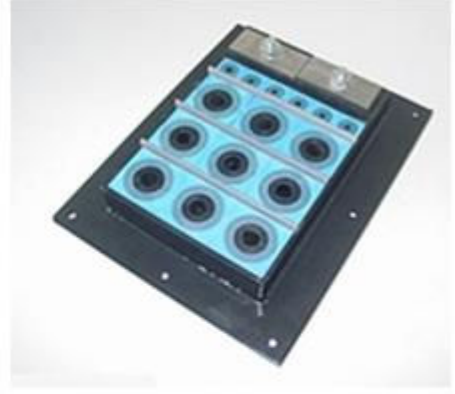
Item Name:	6 Hole Feeder Cable Entry
Product Class:	Through wall Type
Product Model:	ETW-6H-AL(SS)
Metal Plate Material:	Aluminum or Stainless Steel
Hoop Material:	Iron Zincification
Boot Material:	Black Rubber
Boot Match Cable:	1/2",7/8",1-1/4",1-5/8" Feeder
Installation Size:	350MM×400MM



Item Name:	7 Hole Feeder Cable Entry
Product Class:	Through wall Type
Product Model:	ETW-7H-AL(SS)
Metal Plate Material:	Aluminum or Stainless Steel
Hoop Material:	Iron Zincification
Boot Material:	Black Rubber
Boot Match Cable:	1/2",7/8",1-1/4",1-5/8" Feeder
Installation Size:	450MM×450MM



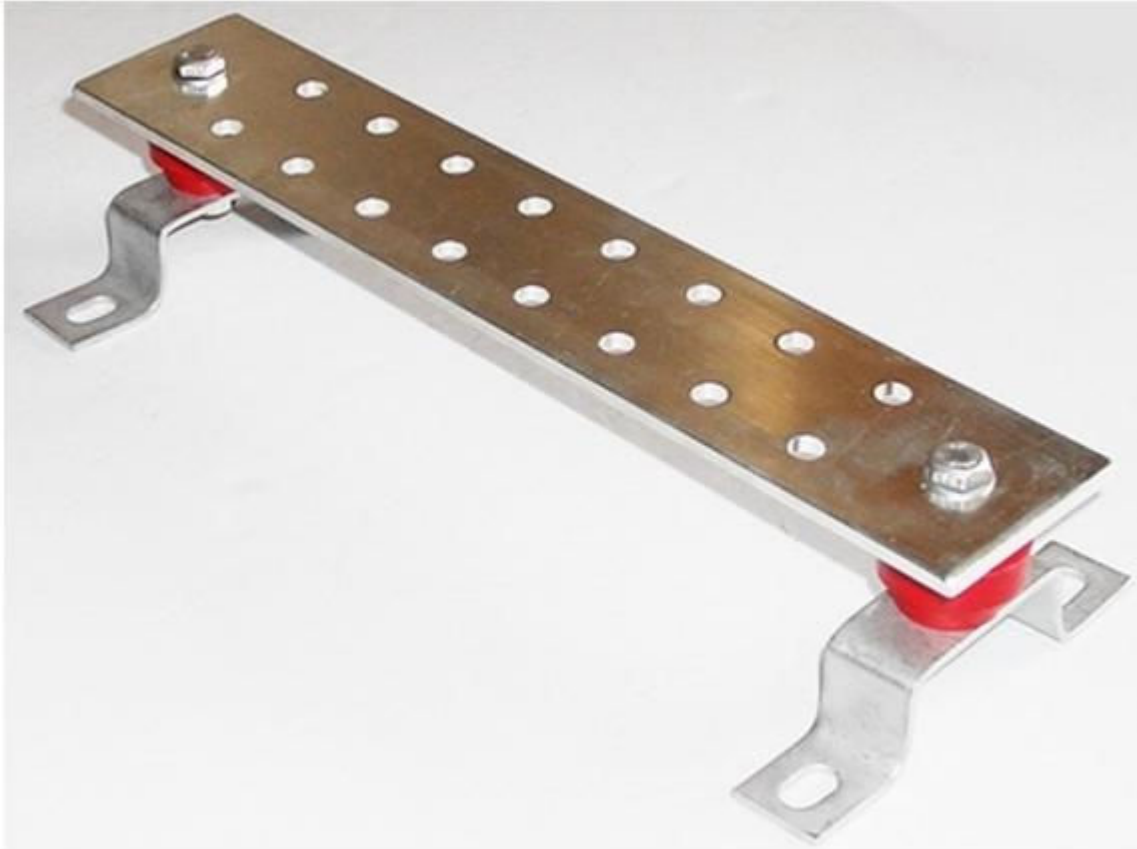
Item Name:	Multidiameter Feeder Cable Entry
Product Class:	Alterable Multidiameter
Product Model:	EAM-6X1/2"+9X78"
Metal Plate Material:	Iron Spray-Paint
Clapboard Material:	Aluminum or Iron
Boot Material:	Multidiameter Rubber
Wedge Kit Material:	Black Rubber
Boot Match Cable:	1/2",7/8",1-1/4",1-5/8" Feeder



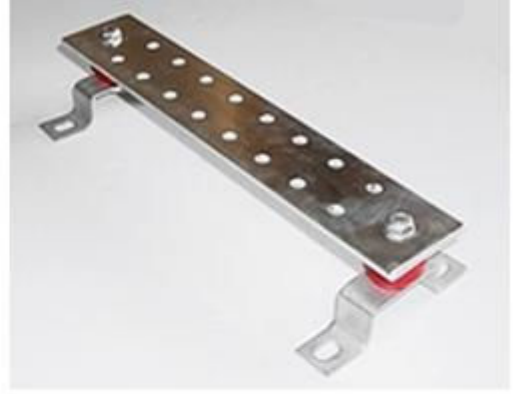
Item Name:	Multidiameter Feeder Cable Entry
Product Class:	Alterable Multidiameter
Product Model:	EAM-6X1/2"+12X78"
Metal Plate Material:	Iron Spray-Paint
Clapboard Material:	Aluminum or Iron
Boot Material:	Multidiameter Rubber
Wedge Kit Material:	Black Rubber
Boot Match Cable:	1/2",7/8",1-1/4",1-5/8" Feeder



GROUND BAR & BRACKET



Item Name:	Grounding Bar
Product Class:	Outdoor Use
Product Model:	GB-6X60X300-RC
Grounding Material:	Red Copper or Brass *
Grounding Hole:	14 Hole or Customize
Grounding Bar Size:	6MMX60MMX300MM



Item Name:	Grounding Bar
Product Class:	Outdoor Use
Product Model:	GB-6X80X300-RC
Grounding Material:	Red Copper or Brass *
Grounding Hole:	14 Hole or Customize
Grounding Bar Size:	6MMX80MMX300MM



Item Name:	Grounding Bar
Product Class:	Outdoor Use
Product Model:	GB-6X80X400-RC
Grounding Material:	Red Copper or Brass *
Grounding Hole:	18 Hole or Customize
Grounding Bar Size:	6MMX80MMX400MM



Item Name:	Grounding Bar
Product Class:	Outdoor Use
Product Model:	GB-6X100X300-RC
Grounding Material:	Red Copper or Brass *
Grounding Hole:	14 Hole or Customize
Grounding Bar Size:	6MMX100MMX300MM

